



# MAGNUM

## HIGH PRESSURE ARCH



## ***THE ULTIMATE IN HIGH PRESSURE POWER***

*High-pressure fan jets or turbo nozzles blast spray exactly where needed for powerful cleaning and rinsing at higher line speeds. The optional pneumatic feature stationed at the top and sides provides front-to-back flipping action for maximum dwell time. Quick and easy to install, it's a great addition that takes up minimal space at new or existing sites.*

---

### ***An Industry Leading Innovation***

- Reaches the entire vehicle surface
- Minimum space required
- Quick and easy install at new or existing sites



## WHY CHOOSE MAGNUM HIGH PRESSURE ARCH?

### Features:

- Aluminum construction with anodized black aluminum manifolds
- All stainless steel hardware
- Corrosion resistant Pro-Coat finish
- Use with fresh or recycled water

### Technical Data

#### Options:

- 20 or 35 GPM water usage
- M2000, M3500 or M2100RD pumping station

#### Water:

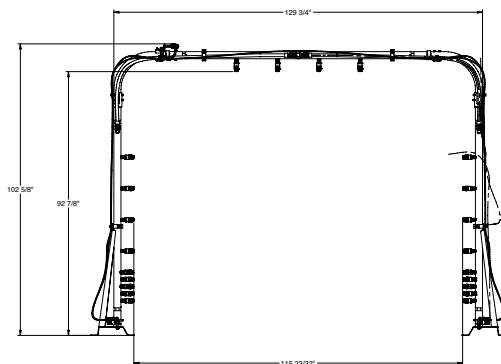
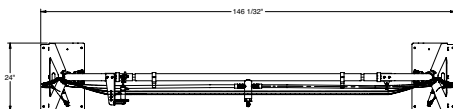
- 20 GPM (75.7 LPM) @ 800 PSI (55 BAR)
- 35 GPM (132 LPM) @ 800 PSI (55 BAR)
- 3/4" supply line - up to 50 ft (15 m)
- 1" supply line - over 50 ft (15 m)

#### Pneumatics:

- 1/4" (6mm) line
- Consumption - 1/2" CFM (14.16 LPM)

#### Electrical:

- 24 VAC or 110 VAC control voltage
- One output required for the following feature and one for the pumping station



### Affordable, Unbeatable Car Wash Equipment

For more than 30 years, MacNeil Wash Systems has provided superior car wash equipment to the tunnel car wash industry, automotive dealers, fleet and rental markets. Our turnkey systems, profit-boosting add-ons and cost-effective retrofits deliver a consistently superior clean with lower maintenance, higher throughput and greater revenue opportunity. Today, MacNeil equipment is more affordable than ever. Put us to the test.

MacNeil reserves the right to revise designs, make corrections, add or delete features and change specifications at any time without notice or obligation. Information provided is for reference only and is not to be used for installation or construction purposes. Refer to MacNeil Wash Systems' equipment drawings for installation specifications



**OUTLASTS AND OUTSHINES THE REST.**  
MacNeilWash.com 800.361.7797