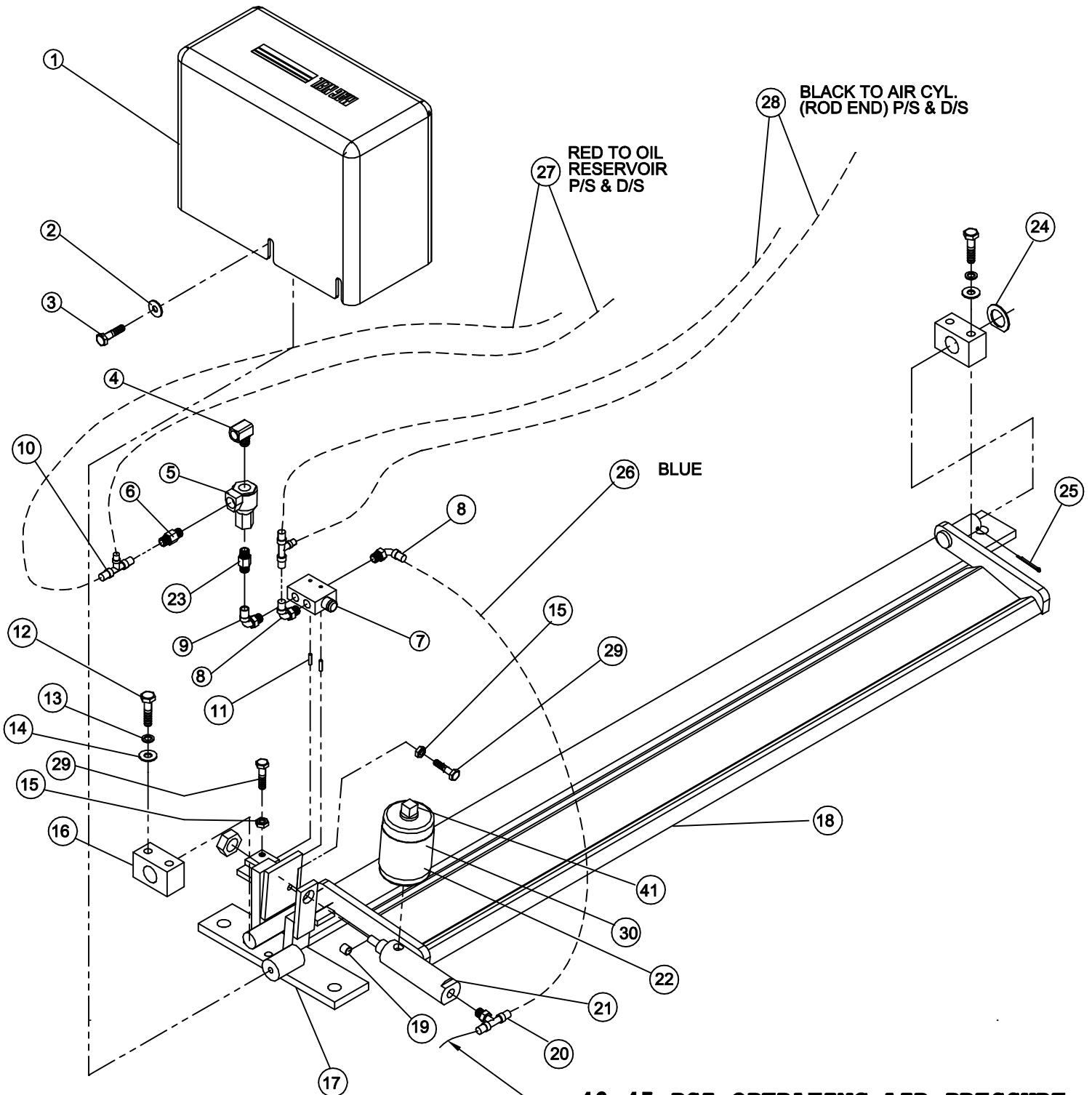


PARTS LIST TREADLE

15-405-00-MP (STANDARD)
15-500-00-MP (MIRROR IMAGE)

DOCUMENT #EPL-405-00



40-45 PSI OPERATING AIR PRESSURE

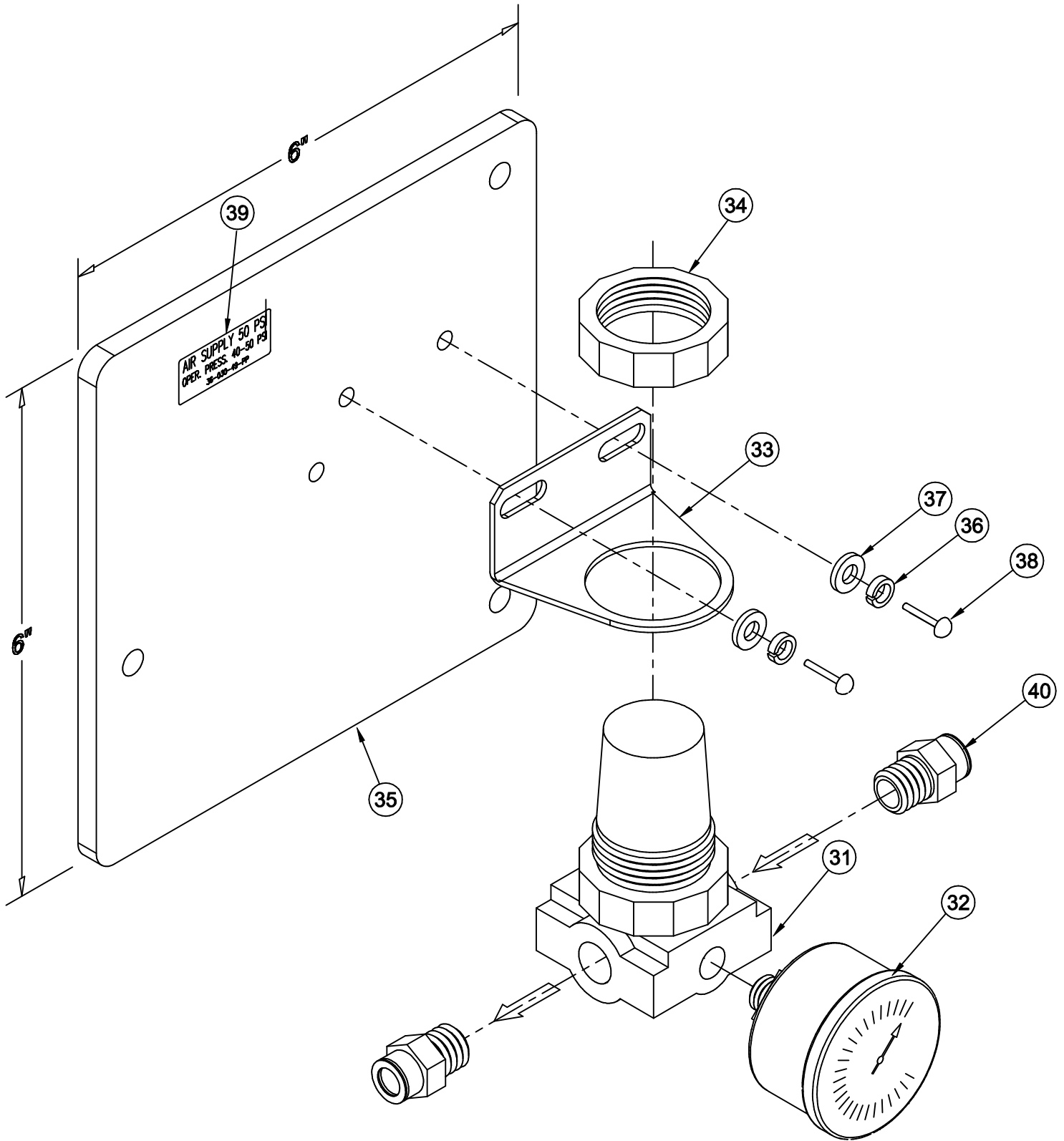
TREADLE

15-405-00-MP (STANDARD)

15-500-00-MP (MIRROR IMAGE)

DEC 2002

PAGE #2



MAGNEIL WASH SYSTEMS

TREADLE

15-405-00-MP (STANDARD)

15-500-00-MP (MIRROR IMAGE)

DEC 2002

PAGE #3

<i>Item no.</i>	<i>Req'd</i>	<i>Description</i>	<i>Part no.</i>	<i>Remarks</i>
1	1	COVER BOX- MOLDED	15-400-12-PP	
2	1	WASHER SS FLAT 1/4"	80-104-000-SI	
3	1	HEX HD CAP SCREW 1/4-20x3/4" SS	82-504-012-SIC	
4	1	Ftg ELB. STREET 1/4" 90 DEG. 115-B	90-212-06-PP	
5	1	VALVE QUICK EXHAUST SQE2	90-142-03-PP	
6	1	FTG CONNECTOR 1/4" TBE-1/4" NPT	90-025-00-PP	
7	1	VALVE 4 WAY 41P (TAC2)	90-137-00-PP	
8	2	FTG ELB 1/4"TBE-1/8NPT 90 DEG 6520-04-02	44-158-00-PP	
9	1	ELBOW STREET 1/8" 90 DEG. 115-A	90-211-02-PP	
10	2	Ftg TEE 1/4" 6540-04-00	90-234-04-PP	
11	2	SPRING PIN SS 1/8"x1/2"	86-202-008-SI	
12	4	HEX HD CAP SCREW 5/16-18x1-3/4" SS	82-505-028-SIC	
13	4	5/16" LOCK WASHER SS	80-905-000-SI	
14	4	5/16" FLAT WASHER SS	80-105-000-SI	
15	2	NUT 1/4"-20 SS	84-004-000-SIC	
16	2	BEARING BLOCK	15-401-05-MP	
17	1	TREADLE BASE Ass'y	15-400-00-MP	
18	1	TREADLE Ass'y	15-401-00-MP	
19	1	BUMPER (RUBBER)	15-400-13-PP	
20	1	FTG TEE 1/4"TBE-1/8NPT P6430-04-02	90-232-00-PP	
21	1	AIR CYLINDER 1"DIAx1" 6-D-1	90-100-12-PP	
22	1	TANK Ass'y	95-150-00-MP	
23	1	FTG NIPPLE BRASS HEX 1/8"x1/4" 122-BA	90-212-01-PP	
24	4	DISK SPACER 80-512-001-SI	15-400-11-MP	
25	1	COTTER PIN SS 1/8"x1"	86-002-016-SI	
26	1	TUBE NYLON - BLUE 1/4" O.D. 18" LG.	33-361-20-4BU	
27	1	TUBE NYLON - RED 1/4" O.D. 600" LG.	33-361-20-4RD	
28	1	TUBE NYLON - BLACK 1/4" O.D. 600" LG.	33-361-20-4BK	
29	2	HHCS 1/4"-20X1" SS	82-504-016-SIC	
30	1	DECAL OIL LEVEL	36-015-02-PP	
31	1	0-60 PSI AIR REGULATOR	90-110-01-PP	
32	1	0-60 PSI AIR GAUGE	90-060-00-PP	
33	1	REGULATOR BRACKET	90-170-02-PP	
34	1	REGULATOR NUT	90-115-00-PP	
35	1	BACK PANEL BOARD 1/4"X6"X6" AL	15-600-01-MP	
36	2	#8 S.S. LOCK WASHER	80-908-000-SN	
37	2	#8 S.S. FLAT WASHER	80-108-000-SN	
38	2	8-32 SCREW SS PAN HEAD PHILIPS 1/2" LG	83-508-008-SNC	
39	1	DECAL-AIR SUPPLY 50 PSI	36-030-49-PP	
40	2	FTG CTR 1/4" TBE-1/4" NPT 6510-04-04	90-025-00-PP	
41	1	PLUG	90-050-06-MP	

MACNEIL WASH SYSTEMS