

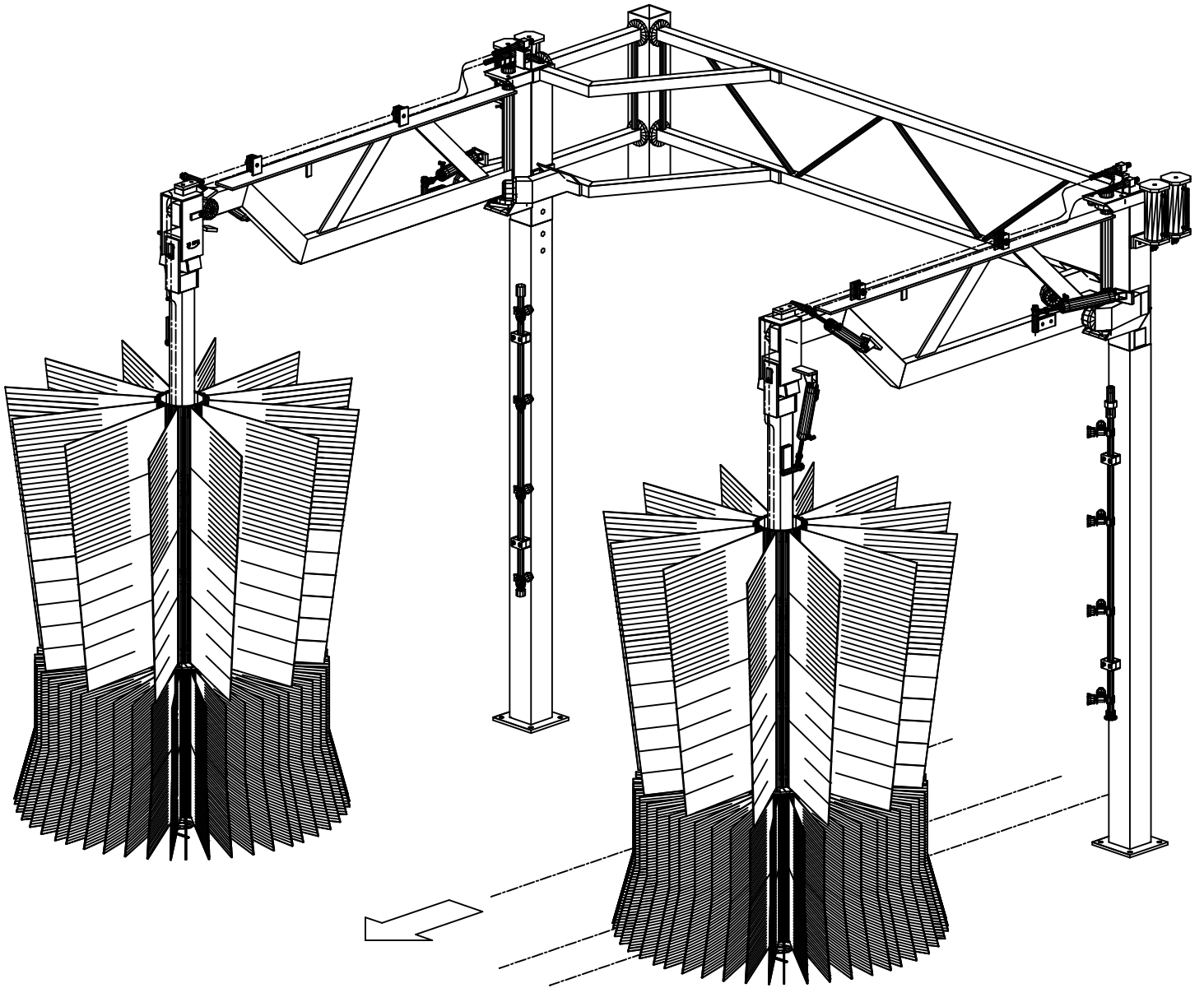
MAG NEIL

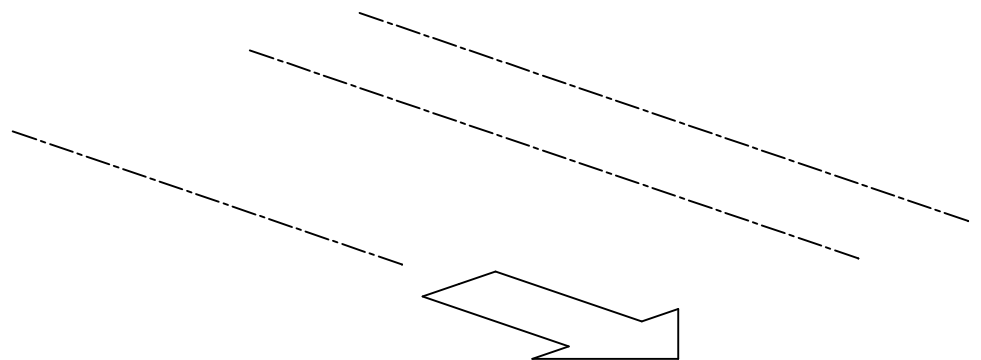
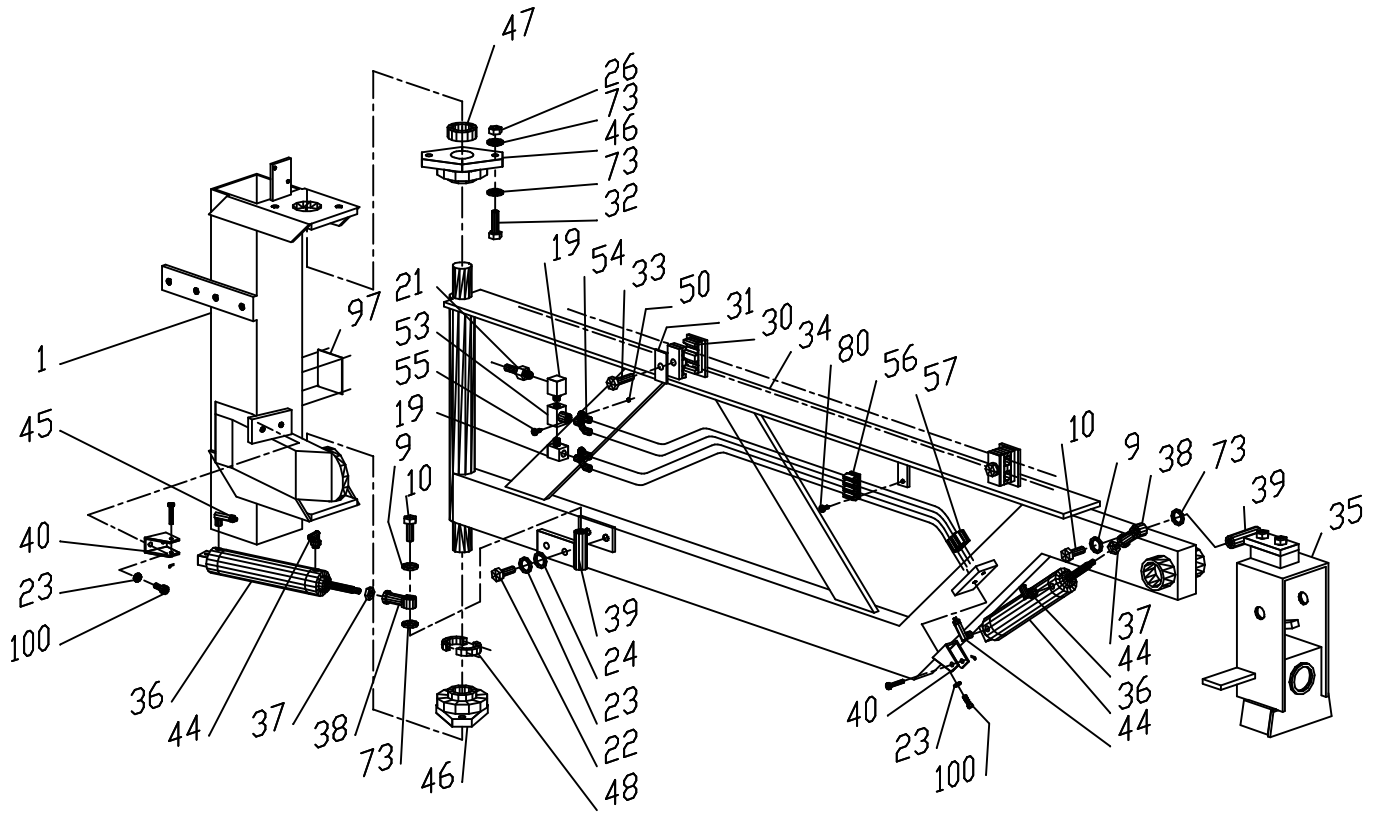
WASH SYSTEMS LIMITED

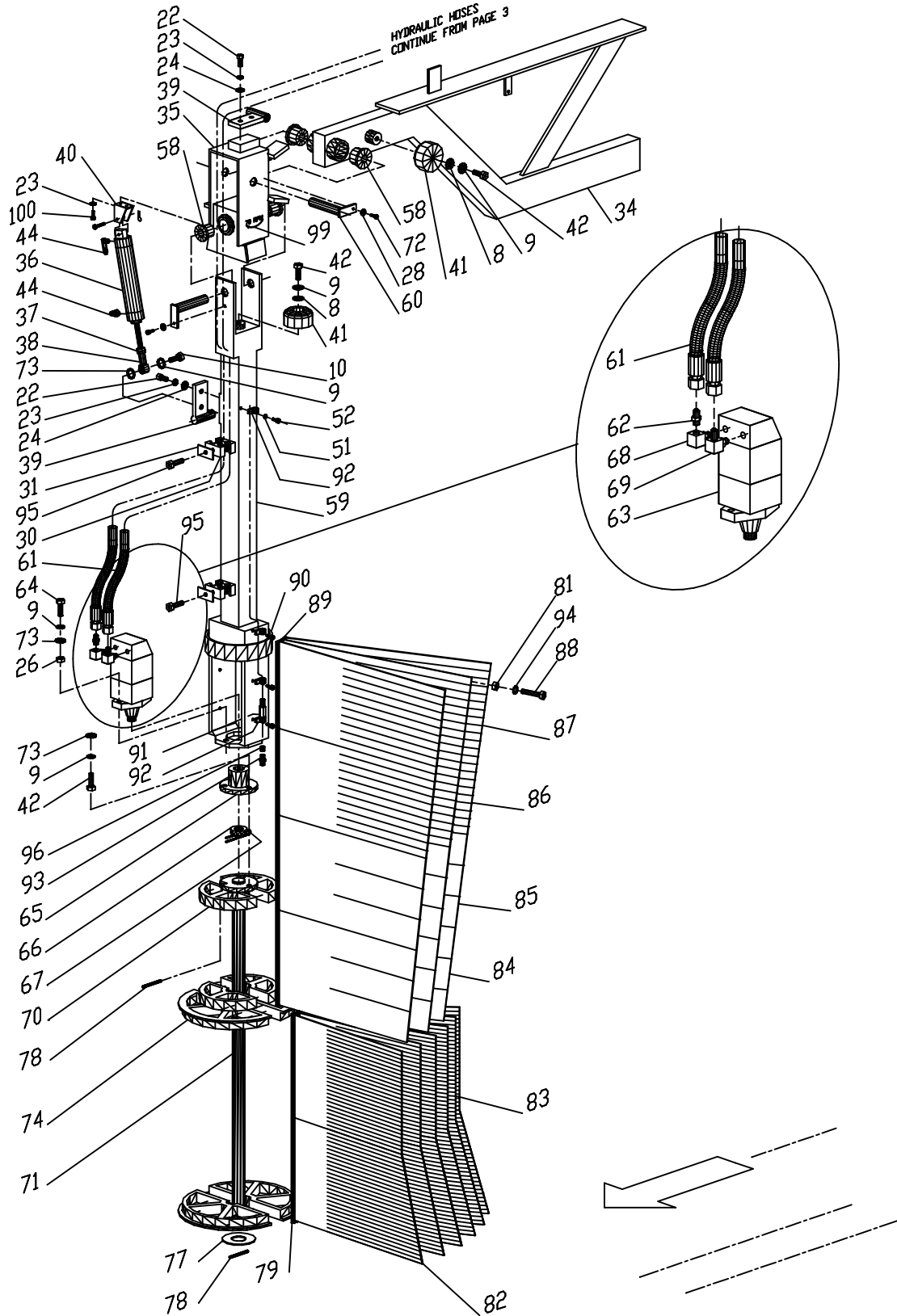
RS-700

SEPTEMBER '98

FLEX WRAP-AROUND WASHER







Item #	Req'd	PART LIST Description	Part #	Page #5 Remarks
1a	1	Short Post DS	55-000-00-MP	
1b	1	Short Post PS	55-001-00-MP	
2	1	23 3/16" Standard Truss DS	52-121-00-MP	
3	1	Top Support Bracket	55-051-00-MP	
4	1	Bottom Support Bracket	55-050-00-MP	
5	2	Inside Bumper Stop Support	55-040-00-MP	
6	2	Pressure Relief Valve	95-144-01-PP	
7	4	1/2"JIC Tee Ftg	95-020-00-PP	
8	8	1/2" Flat Washer SS	80-108-000-SI	
9	24	1/2" Lock Washer SS	80-908-000-SI	
10	6	HHCS 1/2"-13 x 1 1/2" SS	82-508-024-SIC	
11	2	Manifold Pipe Ass'y x 71" SS	42-651-00-MP	
12	2	3/4"GHT-3/4"Hose Barb Blk Poly Adapter	52-523-00-PP	
13	4	3/4" Single Hose Block Set	90-153-00-PP	
14	8	SHCS 1/4"-20 x 1 3/4" SS	82-704-028-SIC	
15	8	Nozzle Body Ass'y	10-200-00-MP	
16	8	Spray Nozzle Tip	10-250-02-PP	Standard Size TP8010
17	4	Oil Reservoir	54-730-00-MP	
18	4	3/8"NPT-1/4"Tube Swivel Elbow	90-224-00-PP	
19	6	3/8" 90Deg Street Elbow	90-214-06-PP	
20	2	3/8"NPT-3/8"Tube Swivel Elbow	90-225-00-PP	
21	4	3/8"MPT-1/2"Hose Barb Brass	90-220-00-PP	
22	12	HHCS 3/8"-16 x 1 1/4" SS	82-506-020-SIC	
23	32	3/8" Lock Washer SS	80-906-000-SI	
24	48	3/8" Flat Washer SS	80-106-000-SI	
25	8	HHCS 1/2"-13 x 3 1/2" SS	82-508-056-SIC	
26	20	1/2"-13 Nylock Nut SS	85-008-000-SIC	
27	4	HHCS 1/4"-20 x 2" SS	82-504-032-SIC	
28	8	1/4" Lock Washer SS	80-904-000-SI	
29	4	1/4" Flat Washer SS	80-104-000-SI	
30	8	Double Cushion Hose Block	90-154-00-PP	
31	8	Double Cushion Hose Block Top Plate	90-154-01-PP	
32	8	HHCS 1/2"-13 x 2" SS	82-508-032-SIC	
33	4	HHCS 5/16"-18 x 2" SS	82-505-032-SIC	
34a	1	Main Arm DS	55-010-00-MP	
34b	1	Main Arm PS	55-011-00-MP	
35a	1	Vertical Arm Head DS	55-020-00-MP	
35b	1	Vertical Arm Head PS	55-021-00-MP	
36	6	Air Cylinder	90-100-01-PP	
37	6	1/2"-20 Jam Nut SS	84-108-000-SIF	
38	6	1/2" Female Rod End	90-151-02-PP	
39	6	Rod End Cylinder Mount	55-060-00-MP	
40	6	Pivot Bracket Ass'y	90-174-00-PP	
41	8	Red Poly Bumper	40-370-00-PP	
42	27	HHCS 1/2"-13 x 1 1/4" SS	82-508-020-SIC	

Item #	Req'd	PART LIST Description	Part #	Page #6 Remarks
43	8	HHCS 3/8"-16 x 1" SS	82-506-016-SIC	
44	10	3/8" Flow Control Valve	90-143-00-PP	
45	2	1/4" Flow Control Valve	90-140-01-PP	
46	4	1 1/2"-2 Hole Flange Bearing SS	90-190-00-PP	
47	2	1 1/2" Collar	55-070-00-PP	
48	2	1 1/2" Split Collar	55-071-00-PP	
49	8	1/2"Dia Spacer x 5/8" Nylon	89-008-010-NI	
50	12	#8 Flat Washer SS	80-108-000-SN	
51	8	#10 Flat Washer SS	80-110-000-SN	
52	8	#10-24 x 1/2" Machine Screw SS	83-510-008-SNC	
53	2	3/8" Brass Extruded Tee	90-250-00-PP	
54	4	3/8"Tube-3/8"NPT "Y" Ftg	90-251-00-PP	
55	4	#8-32 x 1 Machine Screw SS	83-508-016-SNC	
56	2	4-Slot Air Tube Holder	90-252-00-MP	
57	2	3-Slot Air Tube Holder	90-252-01-MP	
58	8	Pivot Bushing	55-080-00-PP	
59a	1	Vertical Arm DS	55-030-00-MP	
59b	1	Vertical Arm PS	55-031-00-MP	
60	4	Pivot Shaft	55-090-00-MP	
61	4	Hyd Hose Ass'y x 151"	95-601-00-MP	
62	2	1/2"JIC Straight Hyd Adaptor	95-202-03-PP	
63	2	Hyd Motor	95-100-03-PP	
64	4	SHCS 1/2"-13 x 2 1/2 SS	82-708-040-SIC	
65	2	Large Bore Motor Hub	41-702-00-MP	
66	2	Motor Nut	95-010-01-PP	
67	2	1/8" x 1 1/2" Cotter Pin Bare	86-002-024-BI	
68	2	Hyd Elbow Machined Straight	95-256-00-MP	
69	2	Hyd Elbow Machined For Depth	95-257-00-MP	
70	4	Brush Core Hub 8"Dia	20-018-00-PP	
71	2	42 3/4" Brush Shaft	54-600-00-MP	
72	4	HHCS 1/4"-20 x 3/4" SS	82-504-012-SIC	
73	48	1/2"SAE Flat Washer SS	80-208-000-SI	
74	4	Brush Core Hub 12"Dia	20-016-00-PP	
75	8	1/8"NPT-1/4"Tube Swivel Elbow	90-223-02-PP	
76	4	Nylon Tube 1/4"Dia x 6 1/2"	54-730-05-MP	
77	2	1 1/2" Flat Bolt Washer PL	80-024-000-ZI	
78	10	1/4" x 2" Spring Pin SS	86-204-032-SI	
79	8	Bottom Brush Core Panel x 26"	20-072-00-PP	
80	4	#8-32 x 1/2 Machine Screw SS	83-508-008-SNC	
81	12	5/16"-18 Nylock Nut SS	85-005-000-SIC	
82	88	Bottom Brush Tapered Lower Cloth Panel	20-210-56-	Specify Color
83	88	Bottom Brush Upper Cloth Panel	20-290-56-	Specify Color
84	24	H/H Brush Lower Cloth Panel	20-310-56-	Specify Color
85	24	H/H Brush Middle Lower Cloth Panel	20-330-56-	Specify Color

Item #	Req'd	PART LIST Description	Part #	Page #7 Remarks
86	24	H/H Brush Middle Upper Cloth Panel	20-370-56-	Specify Color
87	24	H/H Brush Upper Cloth Panel	20-390-56-	Specify Color
88	12	HHCS 5/16"-18 x 3/4" SS	82-505-012-SIC	
89	12	H/H Brush Core Panel x 46"	20-094-00-PP	
90	2	Halo	54-650-00-MP	
91	2	1/8"NPT-3/8"Hose Barb Coupler Brass	90-033-00-PP	
92	8	1/2" Tube Clamp	90-256-00-PP	
93	2	Spray Nozzle Tip	10-260-00-PP	
94	12	5/16" Flat Washer SS	80-105-000-SI	
95	4	HHCS 5/16"-18 x 2 1/4" SS	82-505-036-SIC	
96	2	1/4"NPT-1/8"NPT Brass Adapter	90-031-00-PP	
97	2	Serial Identification Tag	36-900-00-PP	
98	8	#10-24 x 5/8" Machine Screw SS	83-510-010-SNC	
99a	1	70 RPM Clockwise Decal	36-070-00-PP	
99b	1	70 RPM counter-Clockwise Decal	36-070-01-PP	
100	12	SHCS 3/8"-16 x 1" SS	82-706-016-SIC	
101	1	Air manifold Bulkhead	52-400-00-MP	
102	5	Air Bulkhead Ftg	90-005-01-PP	
103	1	2 Position Hyd Bulkhead	52-402-00-MP	
104	2	Hyd Bulkhead Ftg	95-005-01-PP	
105a	1	3/4" Water Solenoid Valve 24Volt	10-100-05-PP	Specify Item 105a or 105b
105b	1	3/4" Water Solenoid Valve 110Volt	10-100-07-PP	Specify Item 105a or 105b
106	2	Hyd Pressure Flow Warning Decal	36-010-00-PP	
107	2	Hyd Return Flow Warning Decal	36-011-00-PP	

**NOTE: -Items 105a & 105b not shown are located in Control Room
-All quantities listed represent the materials required for both
Driver side DS and Passenger side PS washers.**