

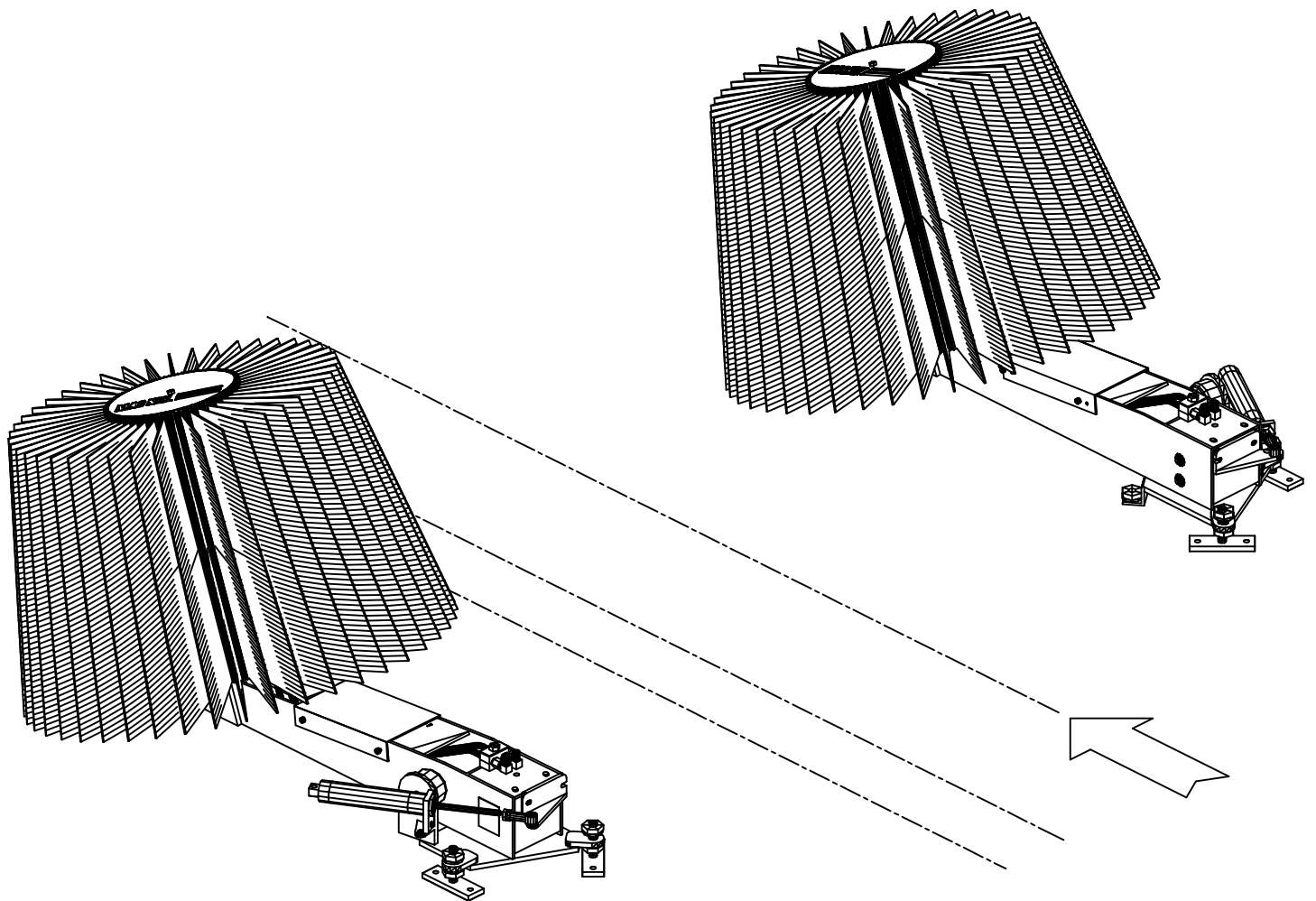
MAGNEIL

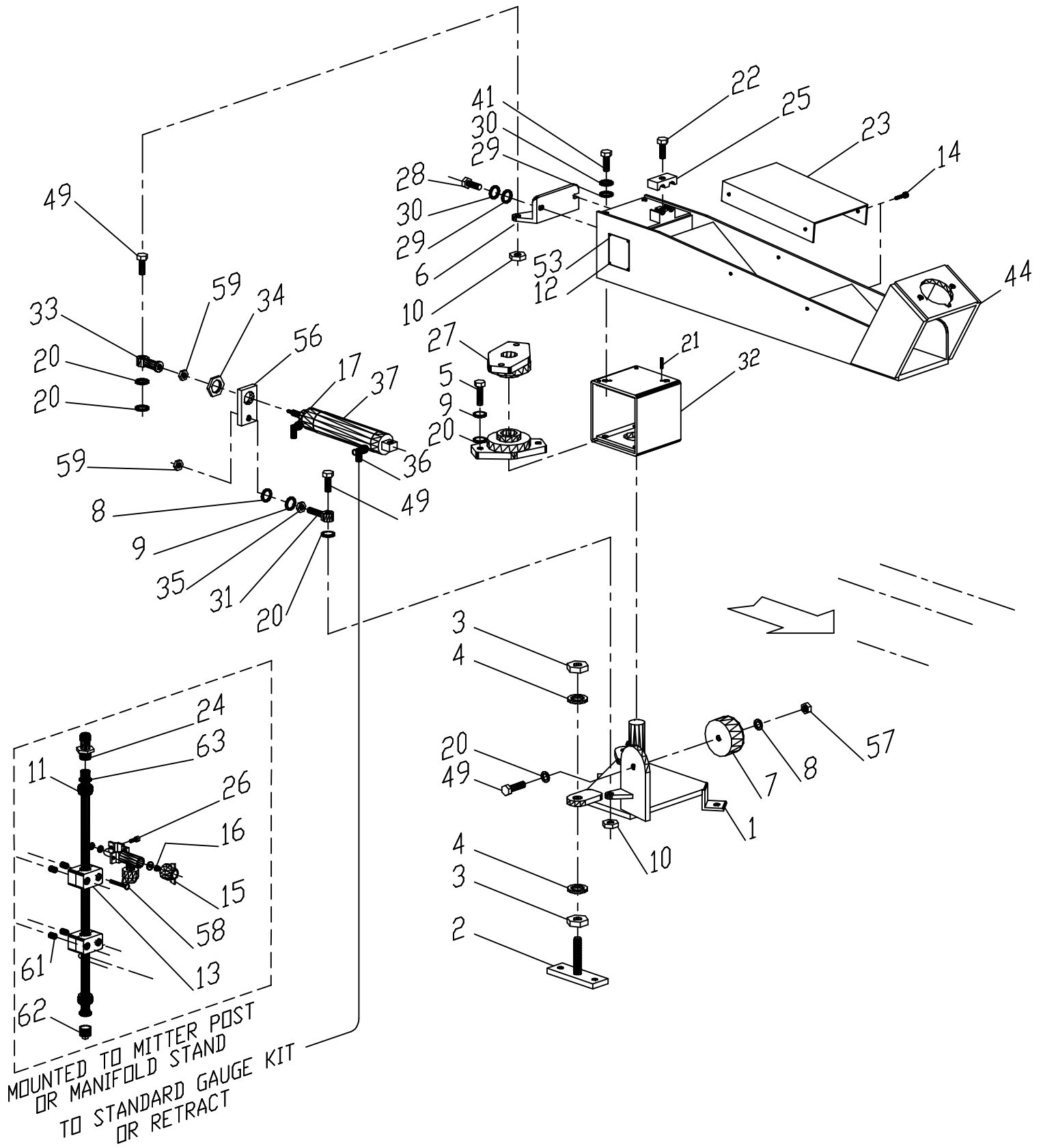
WASH SYSTEMS LIMITED

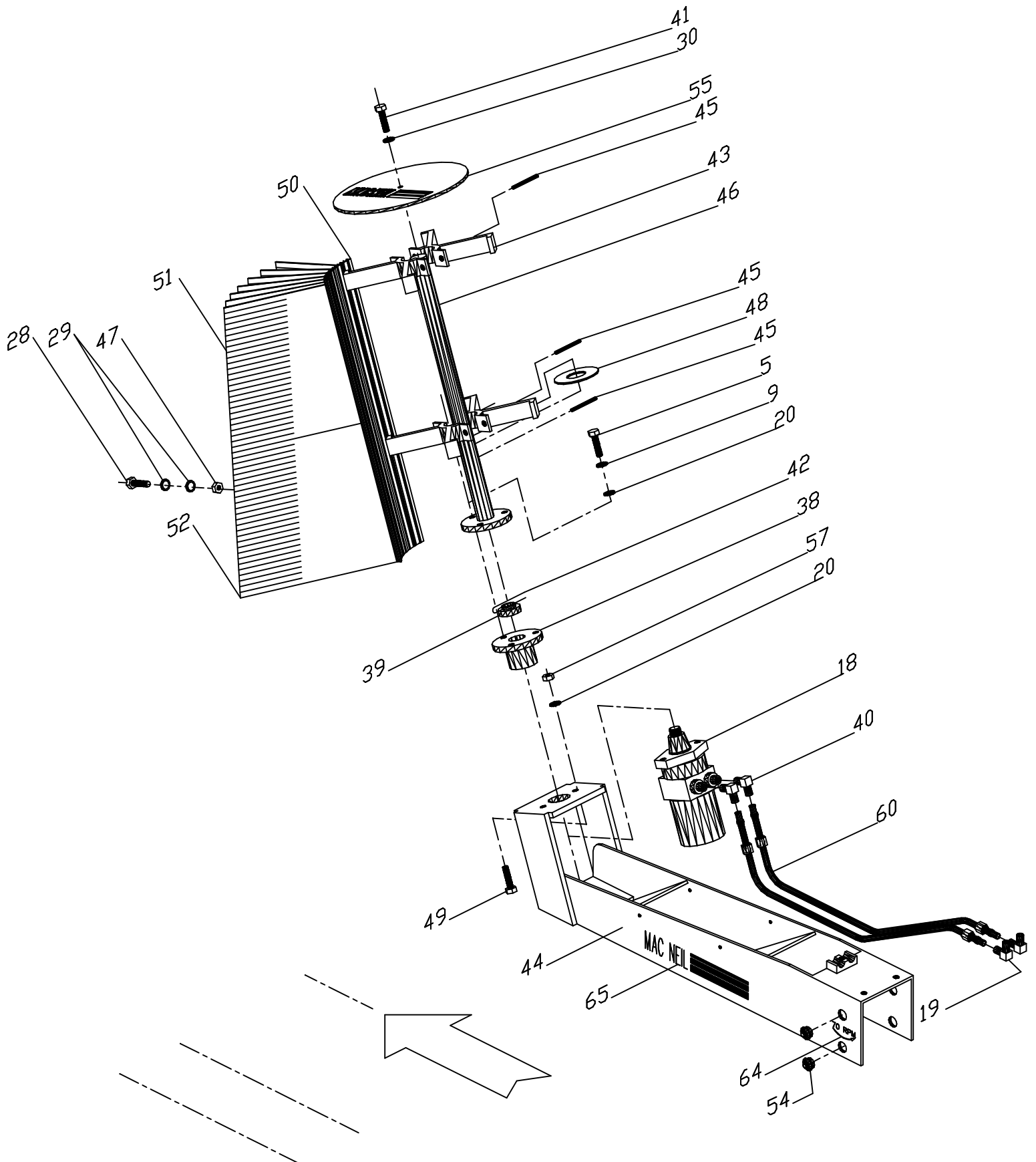
**RS-150
SIDE WASHER**

MAY '99

1
OF 3







Item no.	Req'd	<u>PART LIST</u> Description	Part no.	Page #4 Remarks
1a	1	Side Brush Base DS	43-210-00-MP	
1b	1	Side Brush Base PS	43-220-00-MP	
2	4	Adjuster Foot Base 3 3/4" SS	10-004-00-MP	
3	8	3/4"-10 Nut SS	84-012-000-SIC	
4	8	3/4" Thrust Washer SS	80-612-000-SI	
5	16	HHCS 1/2"-13 x 1 1/4" SS	82-508-020-SIC	
6a	1	Cylinder Mount DS	43-545-00-MP	
6b	1	Cylinder Mount PS	41-570-00-MP	
7	2	Red Poly Bumper	40-370-00-PP	
8	4	1/2" Flat Washer SS	80-108-000-SI	
9	14	1/2" Lock Washer SS	80-908-000-SI	
10	2	1/2"-13 Nut SS	84-008-000-SIC	
11	2	Manifold Pipe Ass'y x 17" SS	41-650-00-MP	
12	2	Serial Identification Tag	36-900-00-PP	
13	4	3/4" Single Hose Block Set	90-153-00-PP	
14	8	#10-24 x 1/2" Machine Screw SS	83-510-008-SNC	
15	4	Nozzle Body Ass'y	10-200-00-MP	
16	4	Spray Nozzle Tip	10-250-02-PP	Standard Size TP8010
17	2	1/4"NPT-1/4"Tube Swivel Elbow	90-223-06-PP	
18	2	Hyd Motor	95-100-04-PP	
19	4	1/2" Hyd Elbow	95-036-08-PP	
20	26	1/2"SAE Flat Washer SS	80-208-000-SI	
21	8	3/16" x 1" Spring Pin Bare	86-203-016-BI	
22	2	SHCS 5/16"-18 x 3/4" SS	82-705-012-SIC	
23	2	Cover Plate SS	43-300-00-MP	
24	2	3/4"GHT-3/4"Hose Barb Blk Poly P	52-523-00-PP	
25	1	Double Cushion 1/2"Hose Block P	90-152-00-PP	
26	4	#10-24 x 5/8" Machine Screw SS	83-510-010-SNC	
27	4	1 1/2"-2 Hole Flange Bearing SS	90-190-00-PP	
28	12	HHCS 3/8"-16 x 1" SS	82-506-016-SIC	
29	28	3/8" Flat Washer SS	80-106-000-SI	
30	14	3/8" Lock Washer SS	80-906-000-SI	
31	2	1/2" Male Rod End	90-151-03-PP	
32	2	Pivot Head	10-900-00-MP	
33	2	1/2" Female Rod End	90-151-02-PP	
34	2	1 1/4" Cylinder Jam Nut	90-090-00-PP	
35	2	1/2"-20 Nut SS	84-008-000-SIF	
36	2	1/4" Flow Control Valve	90-140-01-PP	
37	2	Air Cylinder	90-100-01-PP	

Item no.	Req'd	<u>PART LIST</u> Description	Part no.	Page #5 Remarks
38	2	Small Bore Motor Hub	41-701-00-MP	
39	2	3/4"-16 Castle Nut PL	84-212-000-ZIF	
40	4	Hyd Elbow	95-255-01-PP	
41	8	HHCS 3/8"-16 x 3/4" SS	82-506-012-SIC	
42	2	1/8" x 1 1/2" Cotter Pin Bare	86-002-024-BI	
43	4	Brush Core Hub 12"Dia	20-016-00-PP	
44a	1	Arm PS	43-320-00-MP	
44b	1	Arm DS	43-310-00-MP	
45	6	1/4" x 2" Spring Pin SS	86-204-032-SI	
46	2	19 3/8" Brush Shaft	43-700-00-MP	
47	8	3/8"-16 Nylock Nut SS	85-006-000-SIC	
48	2	1 1/2" Flat Bolt Washer PL	80-024-000-ZI	
49	8	HHCS 1/2"-13 x 2" SS	82-508-032-SIC	
50	8	Bottom Brush Core Panel x 26"	20-072-00-PP	
51	88	Bottom Brush Upper Cloth Panel	20-290-43-	Specify Color
52	88	Bottom Brush Lower Cloth Panel	20-210-43-	Specify Color
53	8	1/8"Dia Pop Rivet PL	87-002-000-ZI	
54	4	1"Dia Hole Plug	44-013-00-MP	
55	2	Top Cover	43-305-00-MP	
56	2	Trunion Mount	43-530-00-MP	
57	4	1/2"-13 Nylock Nut SS	85-008-000-SIC	
58	8	SHCS 1/4"-20 x 1 3/4" SS	82-704-028-SIC	
59	4	1/2"-20 Jam Nut SS	84-108-000-SIF	
60	4	Hyd Tubing Ass'y	95-620-00-MP	
61	8	1/2"Dia Spacer x 5/8" Nylon	89-008-010-NI	
62	2	3/4"GHT Plug	90-063-00-PP	
63	4	Garden Hose Washer	90-202-00-PP	
64a	1	70 RPM Clockwise Decal	36-070-00-PP	
64a	1	70 RPM counter-Clockwise Decal	36-070-01-PP	
65	2	1 3/4" Mac Neil Decal	36-000-00-PP	

NOTE: -All quantities listed represent the materials required for both Driver side DS and Passenger side PS washers.