

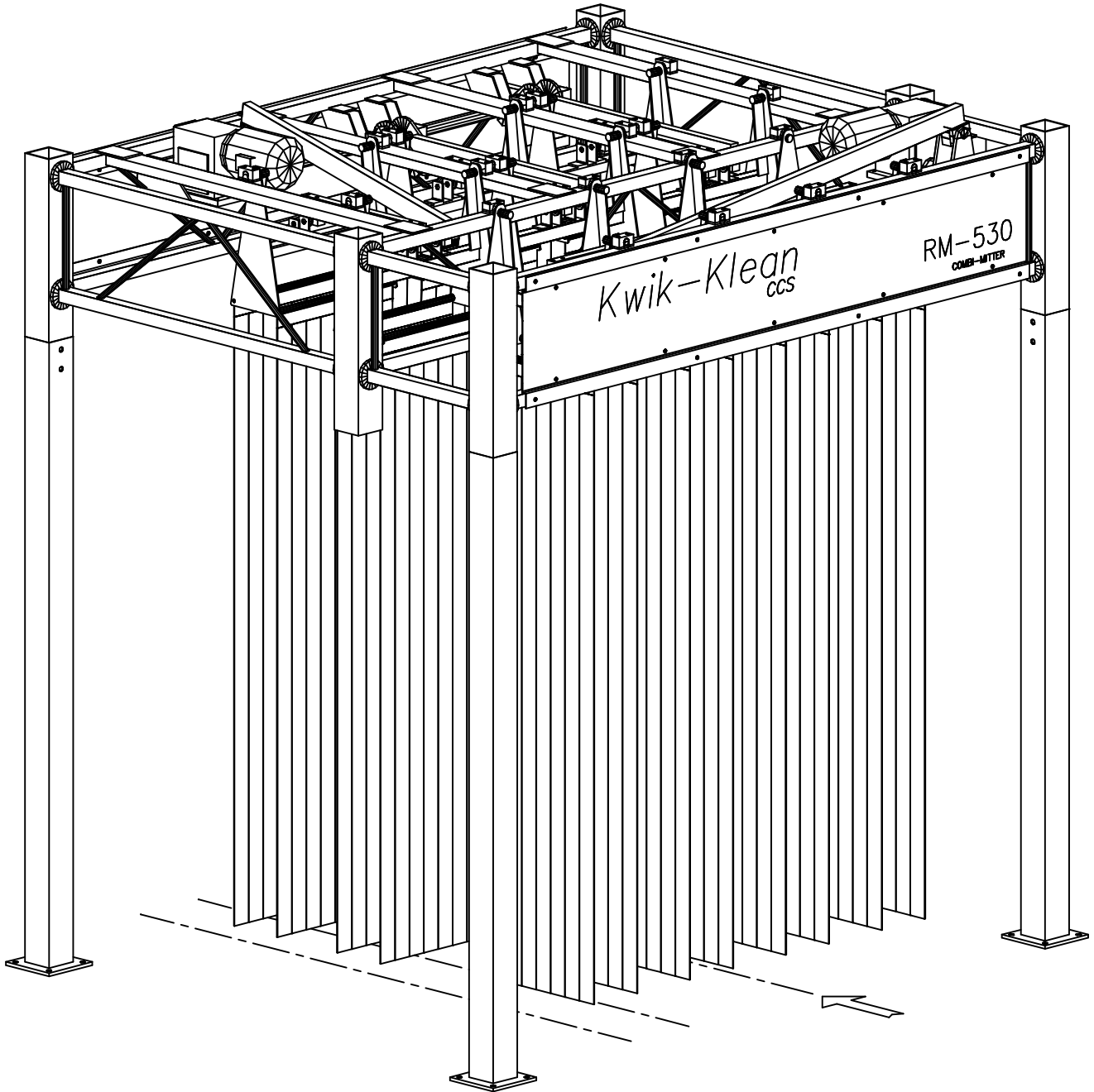
MAGNEIL

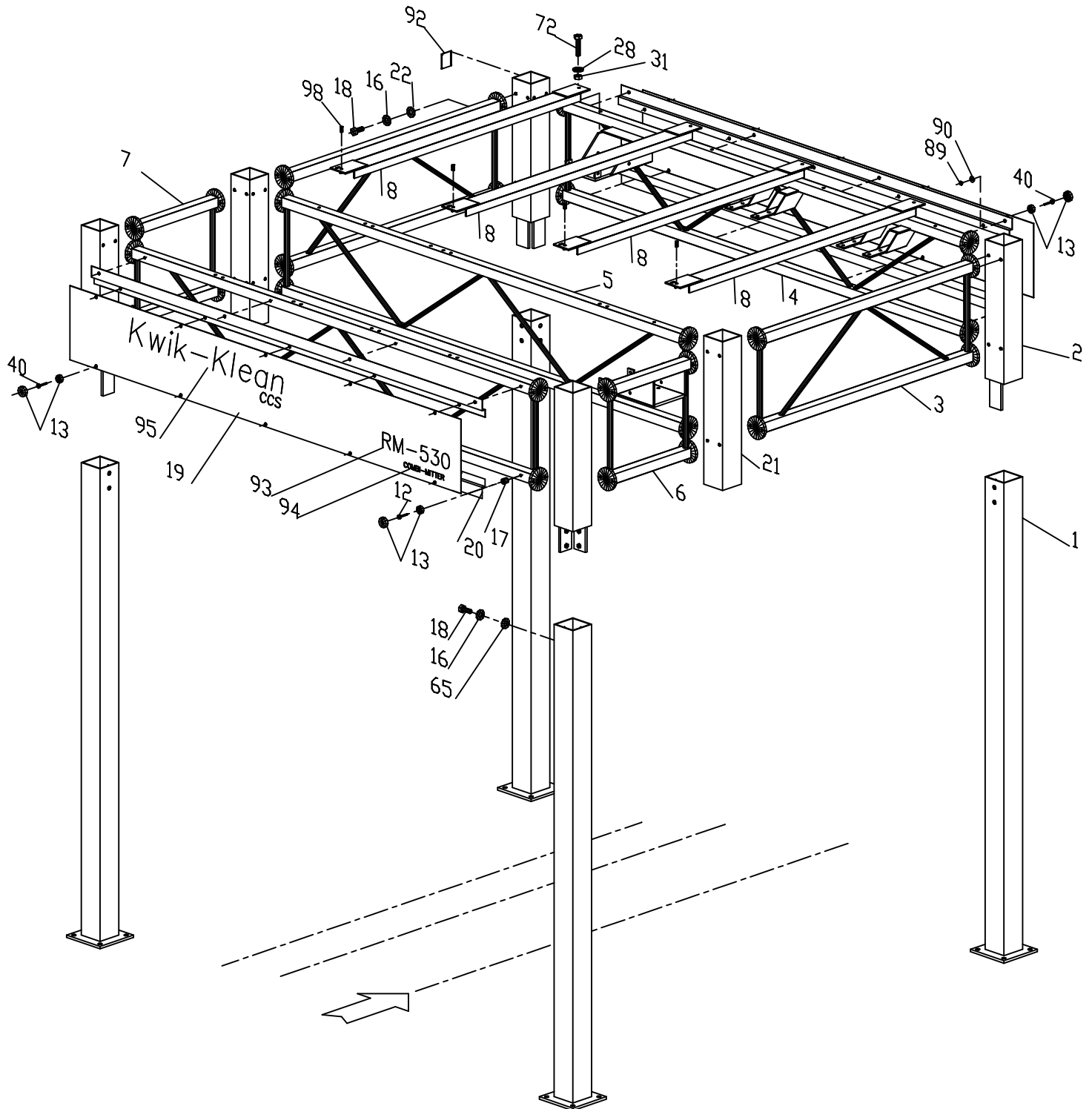
WASH SYSTEMS LIMITED

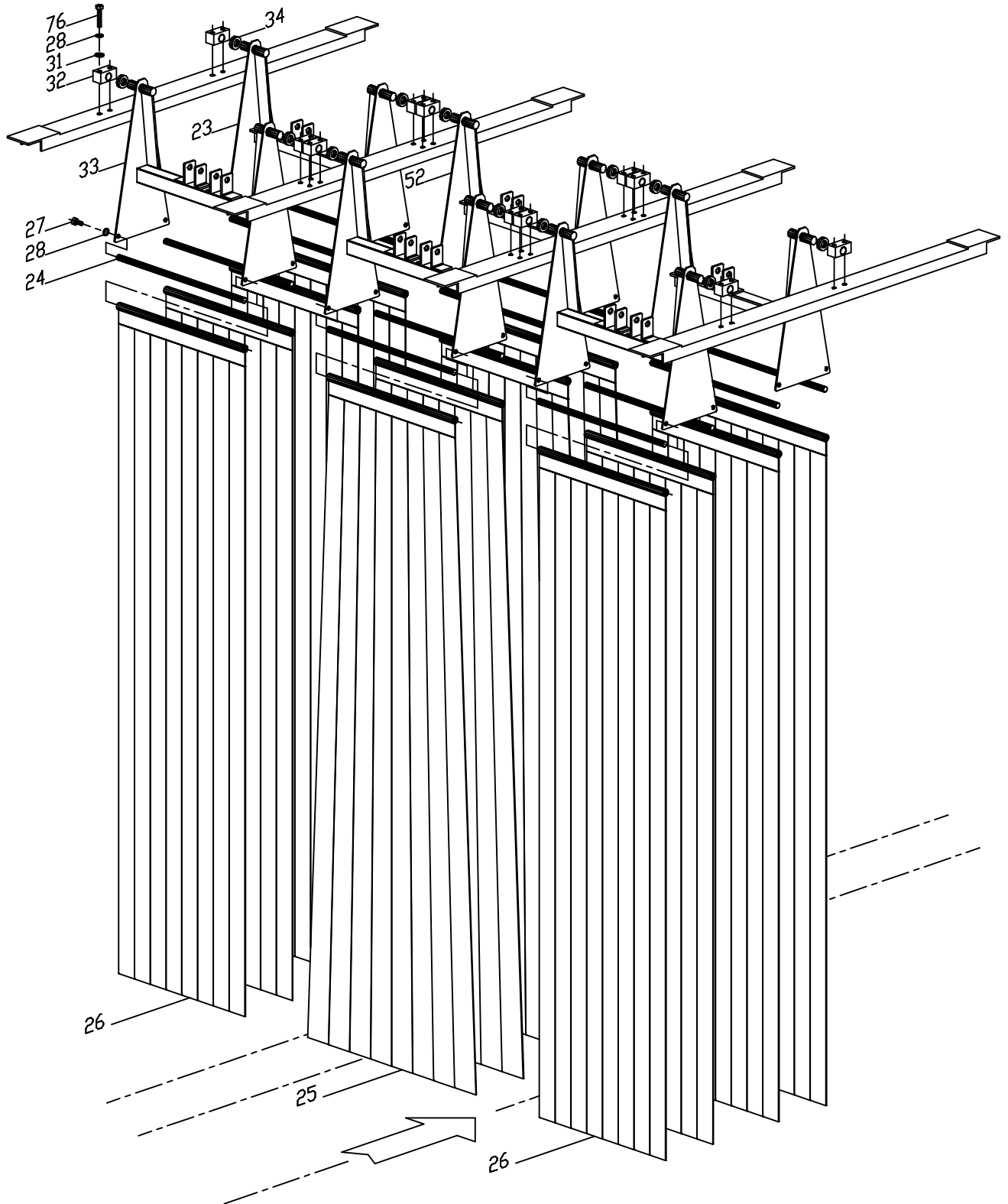
RM-530
COMBI-MITTER

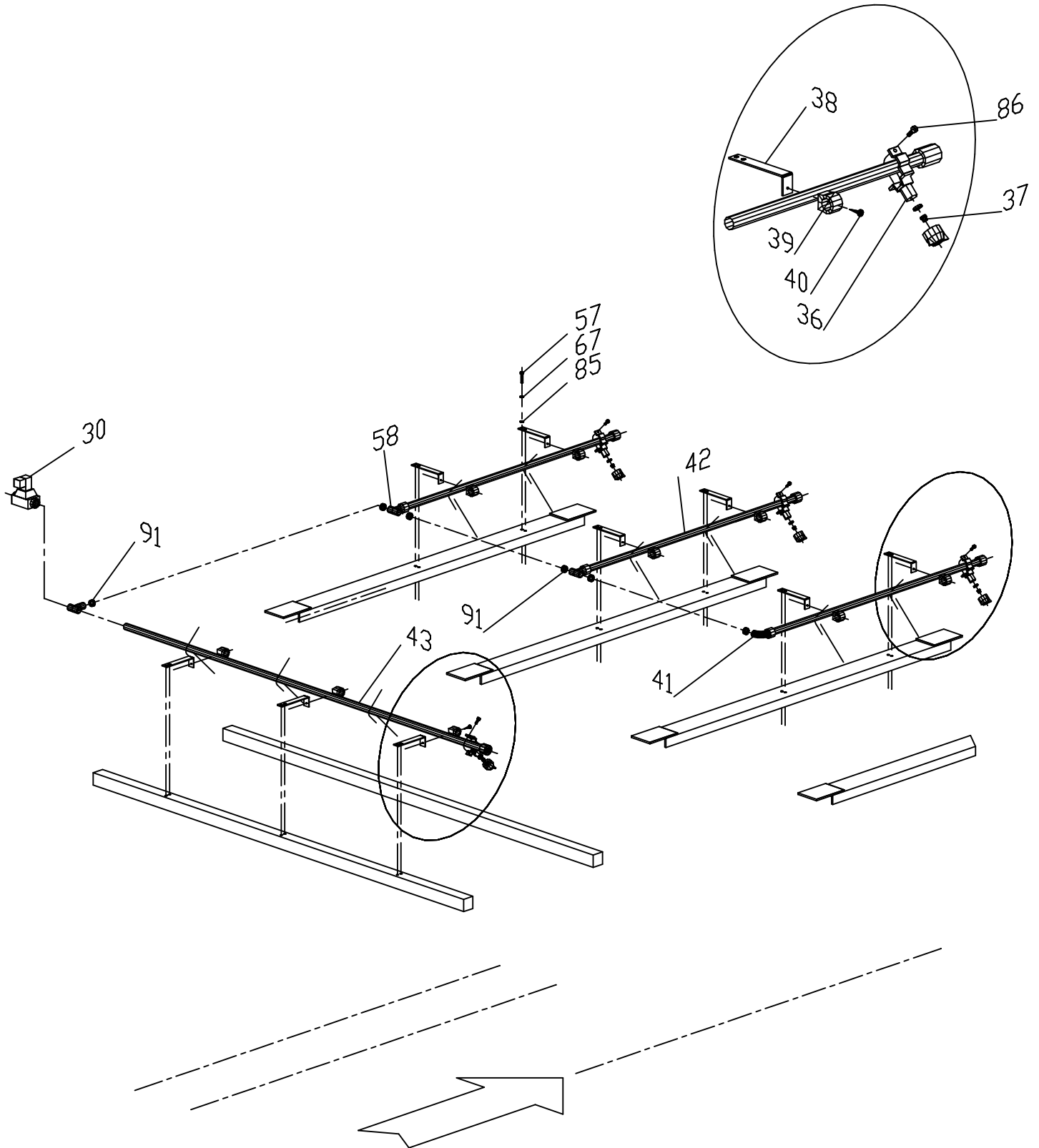
JULY '00

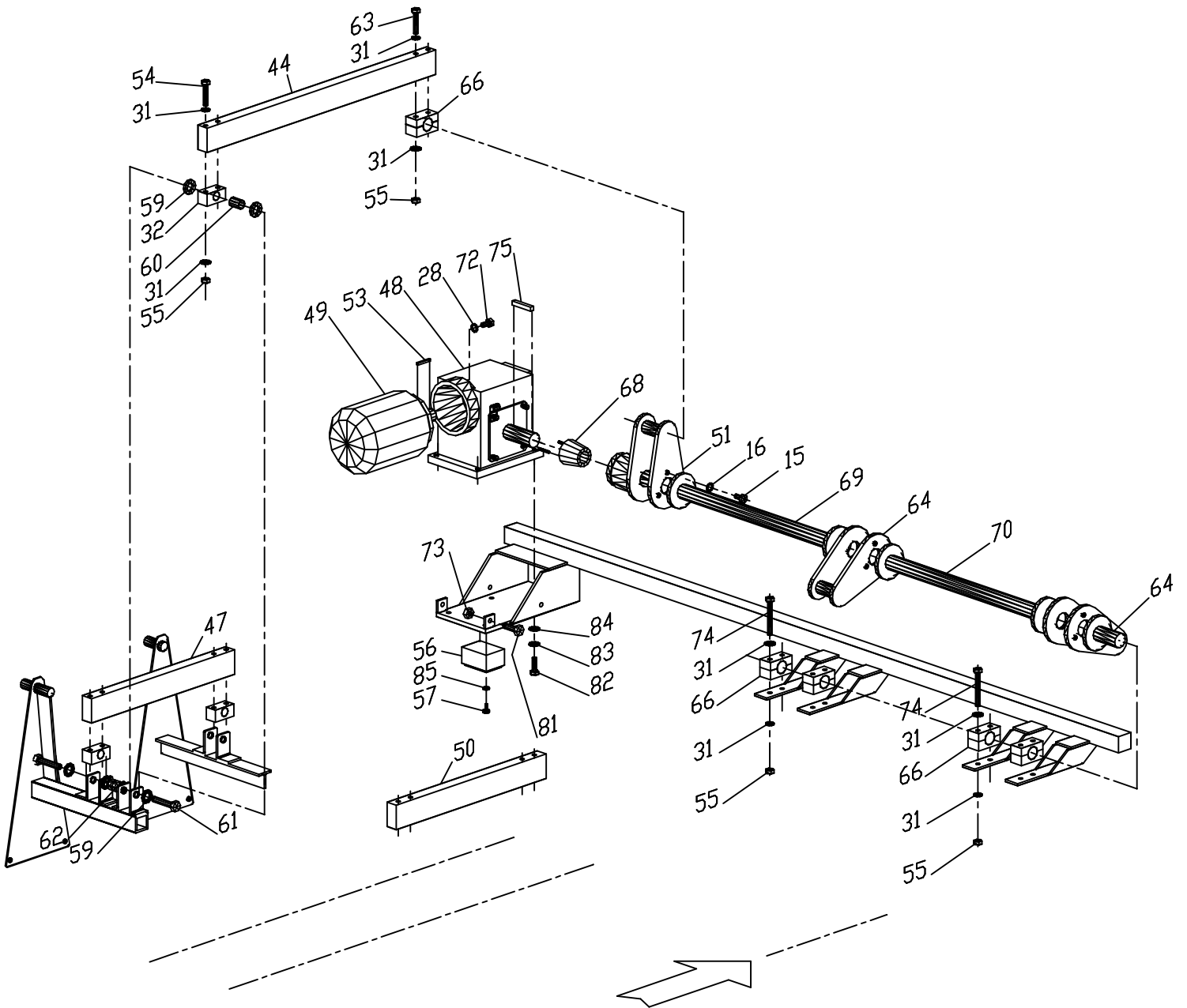
1
OF 10

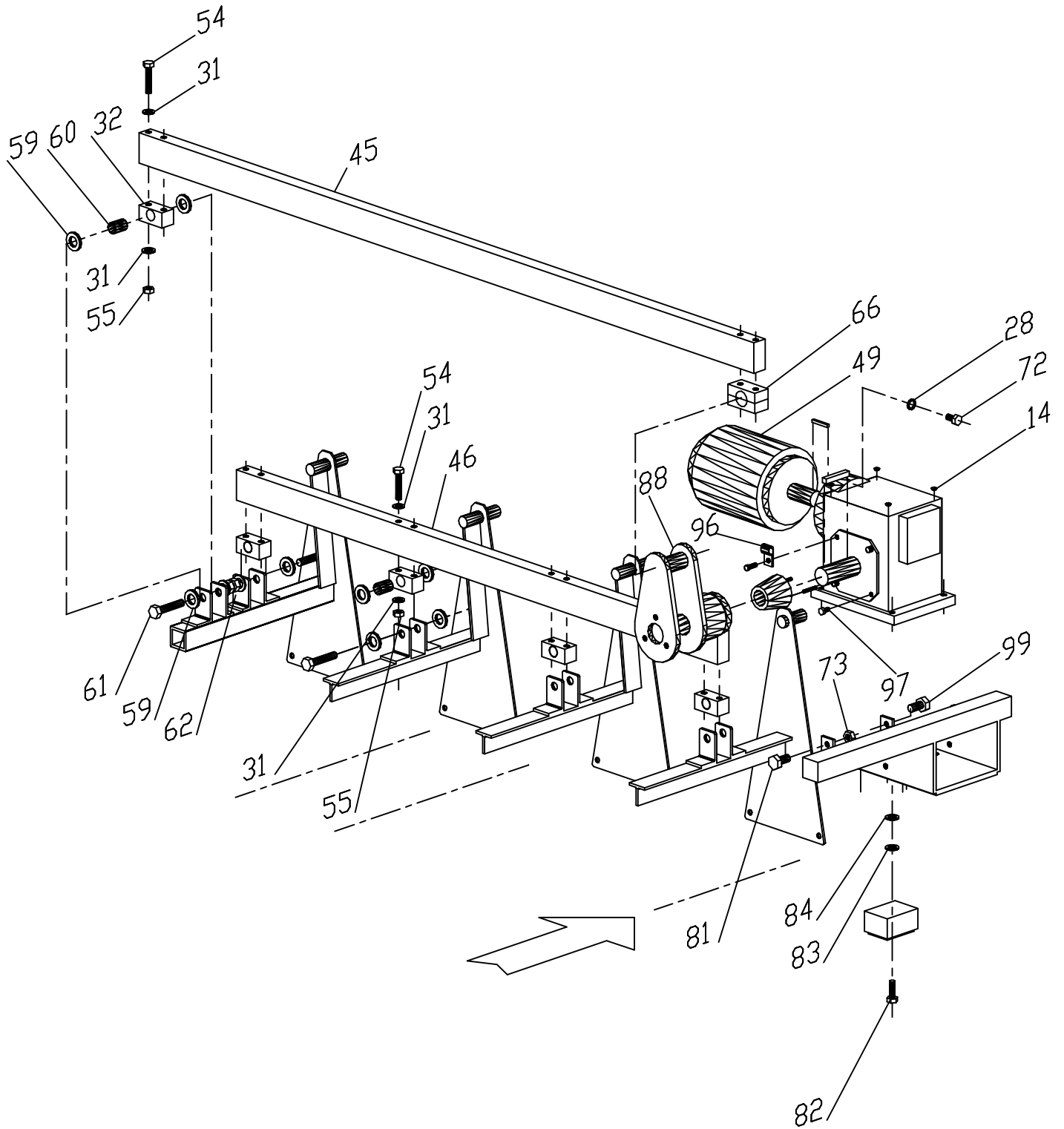












Item no.	Req'd	RM 530 Description	Part no.	Remarks
1	4	Main Post	52-110-00-SG	Specify Color
2	4	4 Plate Stub Leg	52-111-00-SG	Specify Color
3	2	59 1/2" Side Truss	52-122-00-SG	
4	1	107" Motor Truss	52-124-00-SG	
5	2	107" Standard Truss	52-125-00-SG	
6	1	23 3/16" Motor Truss PS	52-120-00-SG	
7	1	23 3/16" Standard Truss DS	52-121-00-SG	
8	4	Standard 66" Beam	52-134-00-SG	
12	16	#10-24 x 1 1/2" Machine Screw SS	83-510-024-SNC	
13	44	Cover Ring w/ Support	52-190-00-PP	
14	8	Push-in Fastener	52-191-00-PP	
15	15	HHCS 1/2"-13 x 1" SS	82-508-016-SIC	
16	87	1/2" Lock Washer SS	80-908-000-SI	
17	16	1/2"Dia Spacer x 7/8" Nylon	89-008-014-NI	
18	72	HHCS 1/2"-13 x 1 1/4" SS	82-508-020-SIC	
19	2	Front & Back Facia S/G	52-185-00-PP	
20	4	Front & Back Facia Trim S/G	52-181-00-PP	
21	2	6 Plate Stub Leg	52-112-00-SG	
22	56	1/2"SAE Flat Washer SS	80-208-000-SI	
23	1	F/B Curtain Rack (Motor End)	52-202-00-MP	
24	20	Curtain Rod x 24"	52-310-00-MP	
25	4	Tapered Mitter Curtain	20-550-52-	Specify Color
26	16	Parellel Mitter Curtain	20-500-52-	Specify Color
27	40	HHCS 3/8"-16 x 3/4" SS	82-506-012-SIC	
28	96	3/8" Lock Washer SS	80-906-000-SI	
29	16	HHCS 3/8"-16 x 2 1/4" SS	82-506-036-SIC	
30	1	3/4" Water Solenoid Valve 24Volt	10-100-05-PP	
31	136	3/8" Flat Washer SS	80-106-000-SI	
32	34	1 1/8"Dia Pivot Bearing	52-750-00-PP	
33	3	F/B Curtain Rack (Push Rod)	52-201-00-SG	
34	12	1/8" UHMW Spacer Washer	52-800-02-PP	
35	8	Bearing Plate	52-755-00-ZN	
36	10	Nozzle Body Ass'y	10-200-00-MP	
37	10	Spray Nozzle Tip	10-250-01-PP	Standard Size TP8006
38	9	Water Manifold Support Bracket S	44-362-00-PP	
39	9	Water Pipe Clamp-Clic #20	90-259-01-PP	

Item no.	Req'd	Description	Part no.	Remarks
40	37	#10-24 x 1/2" Machine Screw SS	83-510-008-SNC	
41	1	3/4"Hose Barb-3/4"NPT Blk Poly E	52-520-02-PP	
42	3	Manifold Pipe Ass'y x 40" PVC	52-512-00-MP	
43	1	Manifold Pipe Ass'y x 68" PVC	52-511-00-MP	
44	3	37 3/8" Push Rod	52-252-00-SG	
45	1	79 3/16" Push Rod	52-250-00-SG	
46	1	63" Tie Rod	52-260-00-SG	
47	1	23 3/8" Tie Rod	52-263-00-SG	
48	2	Gearbox	52-701-00-PP	Specify Oil, See Note
49	2	Electric Motor	52-700-00-PP	Specify Voltage
50	2	24 1/2" Tie Rod	52-264-00-SG	
51	1	Crank Throw (3/4 Drive)	52-212-00-ZN	
52	2	F/B Curtain Rack	52-200-00-SG	
53	2	Electric Motor Shaft Key	52-710-00-MP	
54	28	HHCS 3/8"-16 x 5 1/2" SS	82-506-088-SIC	
55	44	3/8"-16 Nylock Nut SS	85-006-000-SIC	
56	2	Juction Box Ass'y	52-660-00-MP	
57	22	HHCS 1/4"-20 x 1/2" SS	82-504-008-SIC	
58	3	3/4" Blk Poly Tee	52-520-01-PP	
59	56	3/4"SAE Flat Washer PL	80-212-000-ZI	
60	14	Axle Bushing	44-268-00-PP	
61	14	HHCS 3/4"-16 x 3" PL	82-512-048-ZIF	
62	14	3/4"-16 Axle Nut PL	85-212-000-ZIF	
63	8	HHCS 3/8"-16 x 6" SS	82-506-096-SIC	
64	2	Crank Throw (3/4 Driven)	52-213-00-ZN	
65	16	1/2" Flat Washer SS	80-108-000-SI	
66	8	1 1/2"Dia Split Bearing	52-751-00-MP	
67	18	1/4" Lock Washer SS	80-904-000-SI	
68	2	Taperlock Bushing w/ Set Screws	52-720-00-PP	
69	1	26 1/4" Crank Shaft	52-220-00-ZN	
70	1	22 1/8" Crank Shaft	52-221-00-ZN	
71	1	Idler Crank Shaft	52-222-00-ZN	
72	8	HHCS 3/8"-16 x 1" SS	82-506-016-SIC	
73	8	3/8"-16 Nut SS	84-006-000-SIC	
74	8	HHCS 3/8"-16 x 3 1/2" SS	82-506-056-SIC	
75	2	Gearbox Shaft Key	52-711-00-MP	

Item no.	Req'd	RM 530 Description	Part no.	Remarks
76	24	HHCS 3/8"-16 x 2" SS	82-506-032-SIC	
77	4	3/8" UHMW Spacer Washer	52-800-06-PP	
78	1	S/S Curtain Rack (Push Rod)	52-301-00-SG	
79	2	S/S Curtain Rack	52-300-00-SG	
80	1	S/S Curtain Rack (Motor End)	52-302-00-SG	
81	6	HHCS 3/8"-16 x 1 3/4" Full Thread	82-606-028-SIC	
82	8	HHCS 7/16"-14 x 1 1/2" SS	82-507-024-SIC	
83	8	7/16" Lock Washer SS	80-907-000-SI	
84	8	7/16" Flat Washer SS	80-107-000-SI	
85	22	1/4" Flat Washer SS	80-104-000-SI	
86	10	#10-24 x 5/8" Machine Screw SS	83-510-010-SNC	
87	4	5/8" UHMW Spacer Washer	52-800-10-PP	
88	1	Crank Throw (Drive)	52-210-00-ZN	
89	28	#10-24 Nut SS	84-010-000-SNC	
90	28	#10 Lock Washer SS	80-910-000-SN	
91	6	1"-1 1/8" Hose Clamp	52-040-00-PP	
92	1	Serial Identification Tag	36-900-00-PP	
93	2	RM-530 Dark Blue Decal	36-530-01-PP	
94	2	Combil-Mitter Decal	36-005-00-PP	
95a	2	13" Softline Decal	36-001-00-PP	Specify Item 95a or 95b
95b	2	Kwik-Klean Decal	36-003-00-PP	Specify Item 95a or 95b
96	1	WIRE CLAMP	52-715-00-MP	
97	8	HHCS 3/8"-16 x 1 1/4" SS	82-506-020-SIC	
98	4	5/16" x 1" Spring Pin SS	86-205-016-SI	
99	2	HHCS FT HD SS 3/8"-16 x 1 1/2"	82-606-024-SIC	

NOTE: -Synthetic oil (1/2 Gal) in item # 48
 -AGMA #7EP USEM P.N. 000190
 -AGMA #8 USEM P.N. 000191