

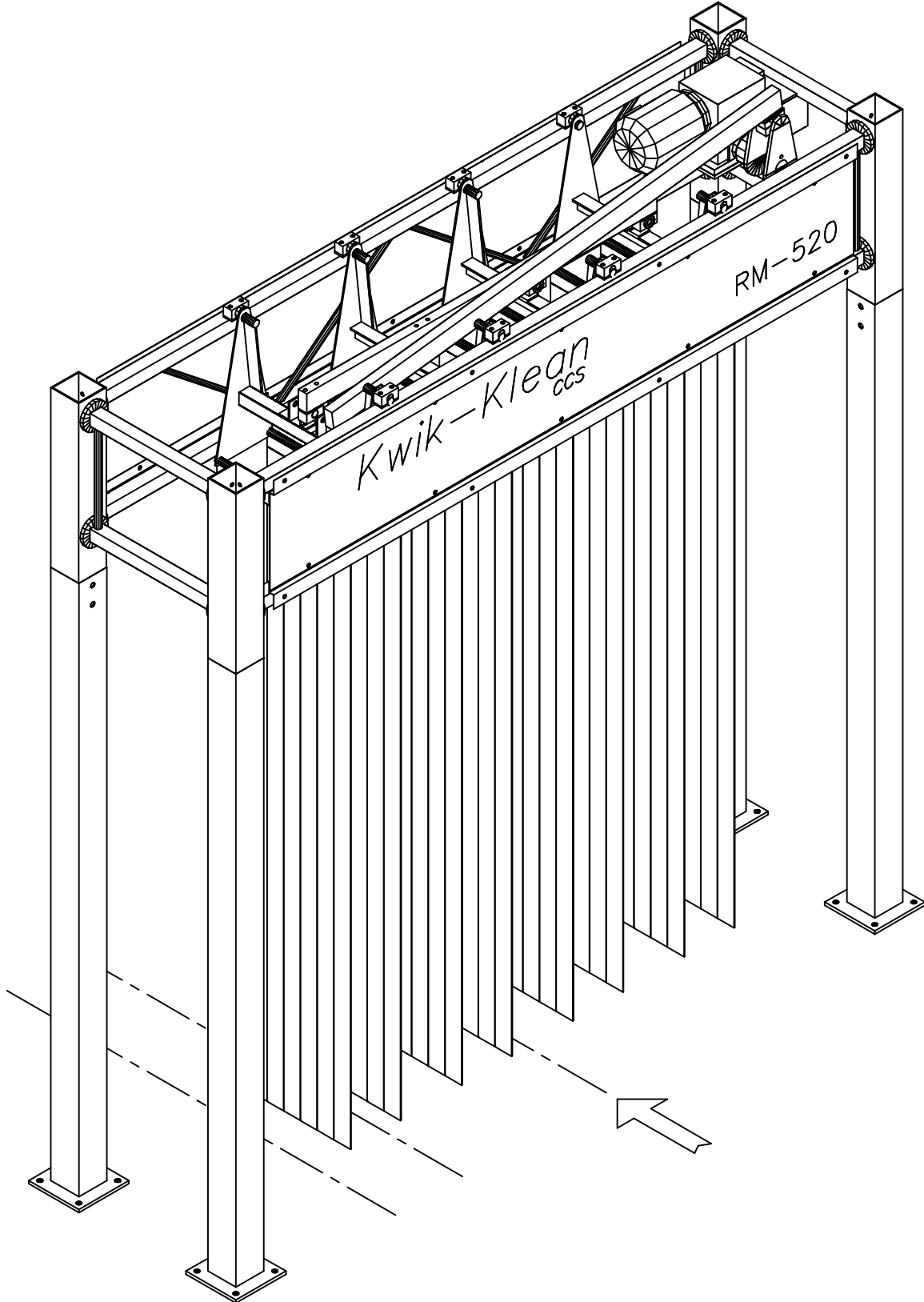
MAGNEIL

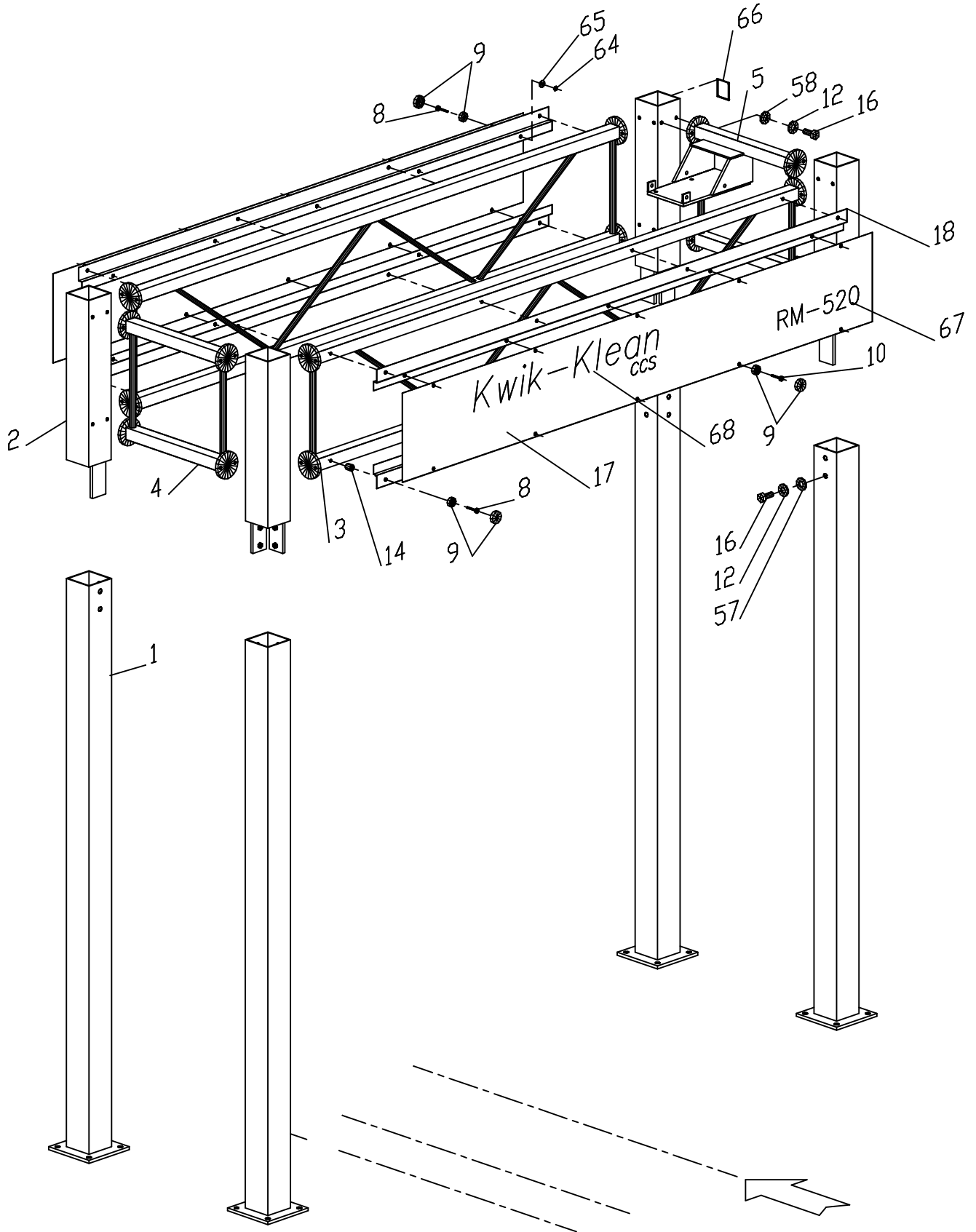
WASH SYSTEMS LIMITED

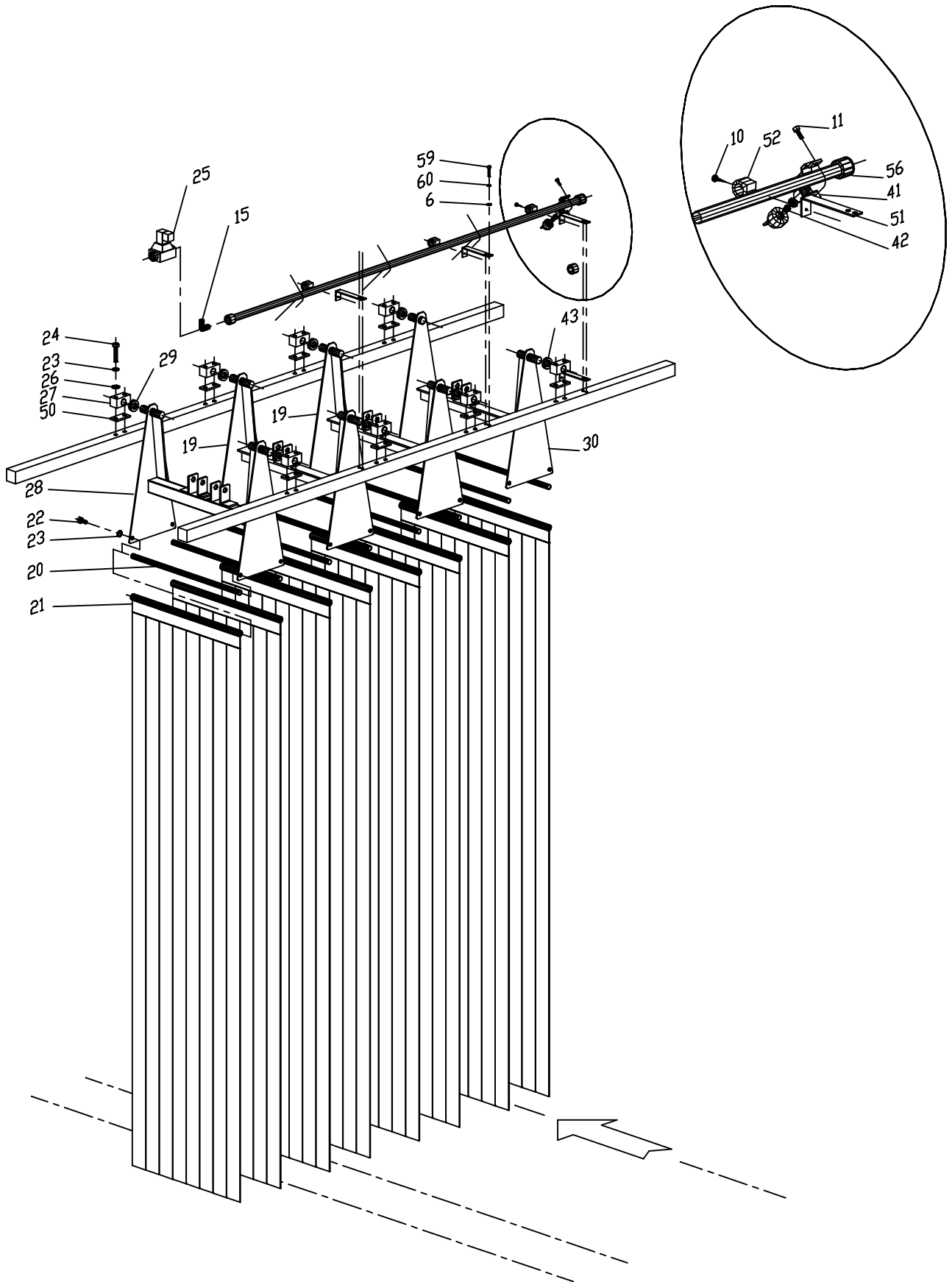
RM-520
SIDE/SIDE MITTER

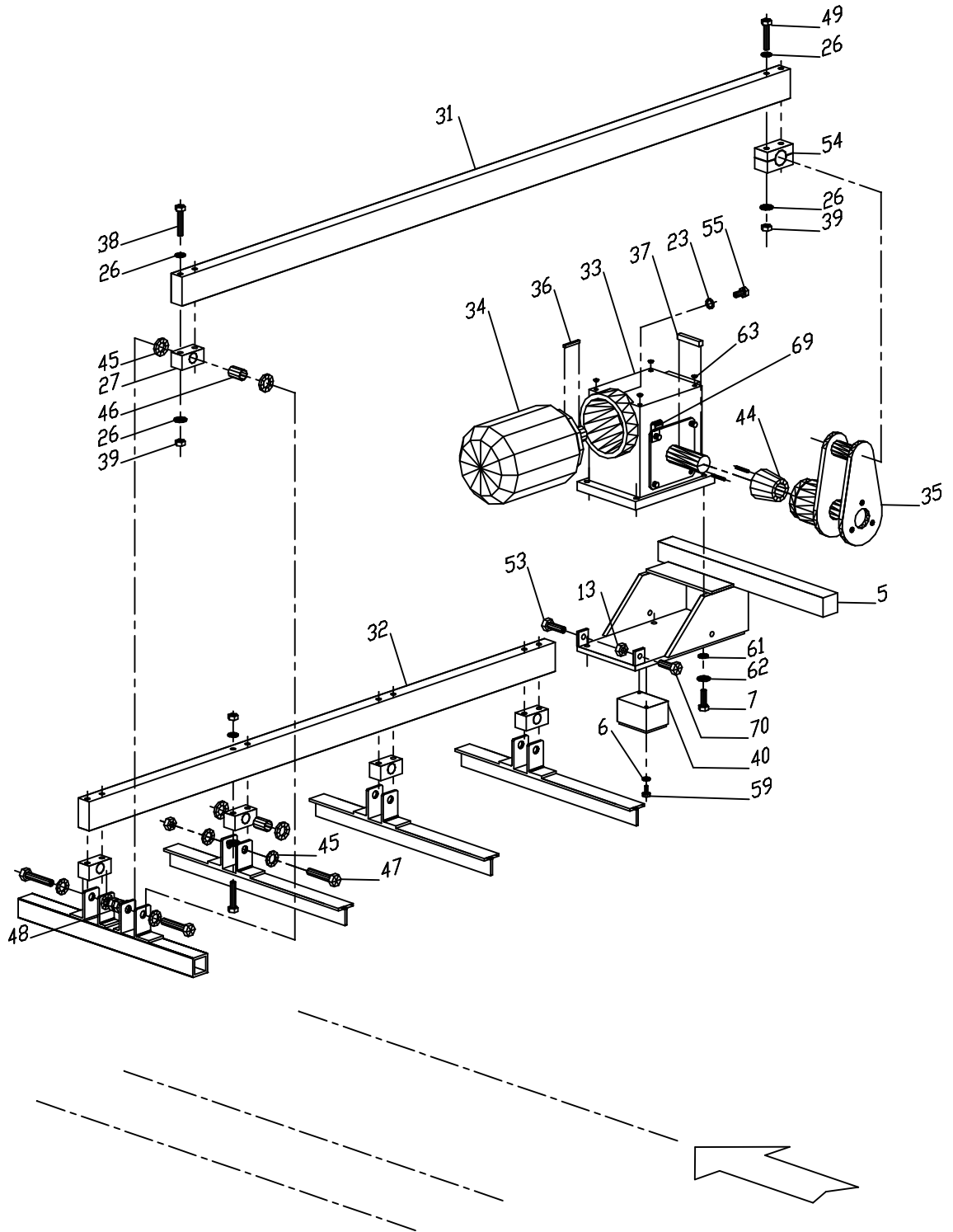
JULY '00

1
OF 6









		<u>PART LIST</u>		
Item no.	Req'd	Description	Part no.	Page # 5 Remarks
1	4	Main Post	52-110-00-SG	Specify Color
2	4	4 Plate Stub Leg	52-111-00-SG	Specify Color
3	2	107" Standard Truss	52-125-00-SG	
4	1	23 3/16" Standard Truss DS	52-121-00-SG	
5	1	23 3/16" Motor Truss PS	52-120-00-SG	
6	8	1/4" Flat Washer SS	80-104-000-SI	
7	4	HHCS 7/16"-14 x 1 1/2" SS	82-507-024-SIC	
8	16	#10-24 x 1 1/2" Machine Screw SS	83-510-024-SNC	
9	44	Cover Ring w/ Support	52-190-00-PP	
10	31	#10-24 x 1/2" Machine Screw SS	83-510-008-SNC	
11	4	#10-24 x 5/8" Machine Screw SS	83-510-010-SNC	
12	48	1/2" Lock Washer SS	80-908-000-SI	
13	4	3/8"-16 Nut SS	84-006-000-SIC	
14	16	1/2"Dia Spacer x 7/8" Nylon	89-008-014-NI	
15	1	3/4"Hose Barb-3/4"NPT Blk Poly E	52-520-02-PP	
16	48	HHCS 1/2"-13 x 1 1/4" SS	82-508-020-SIC	
17	2	Front & Back Facia S/G	52-185-00-PP	
18	4	Front & Back Facia Trim SS	52-181-00-PP	
19	2	S/S Curtain Rack	52-300-00-SG	
20	8	Curtain Rod x 24"	52-310-00-MP	
21	8	Parellel Mitter Curtain	20-500-52-	Specify Color
22	16	HHCS 3/8"-16 x 3/4" SS	82-506-012-SIC	
23	36	3/8" Lock Washer SS	80-906-000-SI	
24	16	HHCS 3/8"-16 x 2 1/4" SS	82-506-036-SIC	
25	1	3/4" Water Solenoid Valve 24Volt	10-100-05-PP	
26	56	3/8" Flat Washer SS	80-106-000-SI	
27	13	1 1/8"Dia Pivot Bearing	52-750-00-MP	
28	1	S/S Curtain Rack (Push Rod)	52-301-00-SG	
29	4	3/8" UHMW Spacer Washer	52-800-06-PP	
30	1	S/S Curtain Rack (Motor End)	52-302-00-SG	
31	1	79 3/16" Push Rod	52-250-00-SG	
32	1	63" Tie Rod	52-260-00-SG	
33	1	Gearbox	52-701-00-PP	Specify Oil, See Note
34	1	Electric Motor	52-700-00-PP	Specify Voltage
35	1	Crank Throw (Drive)	52-210-00-ZN	
36	1	Electric Motor Shaft Key	52-710-00-MP	
37	1	Gearbox Shaft Key	52-711-00-MP	
38	10	HHCS 3/8"-16 x 5 1/2" SS	82-506-088-SIC	
39	12	3/8"-16 Nylock Nut SS	85-006-000-SIC	
40	1	Juction Box Ass'y	52-660-00-MP	
41	4	Nozzle Body Ass'y	10-200-00-MP	
42	4	Spray Nozzle Tip	10-250-01-PP	Standard Size TP8006

Item no.	Req'd	<u>PART LIST</u> Description	Part no.	Page #6 Remarks
43	4	5/8" UHMW Spacer Washer	52-800-10-PP	
44	1	Taperlock Bushing w/ Set Screws	52-720-00-PP	
45	20	3/4"SAE Flat Washer PL	80-212-000-ZI	
46	5	Axle Bushing	44-268-00-PP	
47	5	HHCS 3/4"-16 x 3" PL	82-512-048-ZIF	
48	5	3/4"-16 Axle Nut PL	85-212-000-ZIF	
49	2	HHCS 3/8"-16 x 6" SS	82-506-096-SIC	
50	8	Bearing Plate	52-755-00-ZN	
51	3	Water Manifold Support Bracket S	44-362-00-PP	
52	3	Water Pipe Clamp-Clic #20	90-259-01-PP	
53	3	HHCS 3/8"-16 x 1 3/4" Full Thread	82-606-028-SIC	
54	1	1 1/2"Dia Split Bearing	52-751-00-MP	
55	4	HHCS 3/8"-16 x 1 1/4" SS	82-506-020-SIC	
56	1	Manifold Pipe Ass'y x 76" PVC	52-510-00-MP	
57	16	1/2" Flat Washer SS	80-108-000-SI	
58	32	1/2"SAE Flat Washer SS	80-208-000-SI	
59	8	HHCS 1/4"-20 x 1/2" SS	82-504-008-SIC	
60	6	1/4" Lock Washer SS	80-904-000-SI	
61	4	7/16" Flat Washer SS	80-107-000-SI	
62	4	7/16" Lock Washer SS	80-907-000-SI	
63	4	Push-in Fastener	52-191-00-PP	
64	28	#10-24 Nut SS	84-010-000-SNC	
65	28	#10 Lock Washer SS	80-910-000-SN	
66	1	Serial Identification Tag	36-900-00-PP	
67	2	RM-520 Dark Blue Decal	36-520-01-PP	
68a	2	13" Softline Decal	36-001-00-PP	Specify Item 68a or 68b
68b	2	Kwik-Klean Decal	36-003-00-PP	Specify Item 68a or 68b
69	1	Wire Clamp	52-715-00-MP	
70	1	HHCS FT HD SS 3/8" - 16 x 1 1/2"	82-606-024-SIC	

NOTE: -Synthetic oil (1/2 Gal) in item # 33
 -AGMA #7EP USEM P.N. 000190
 -AGMA #8 USEM P.N. 000191