

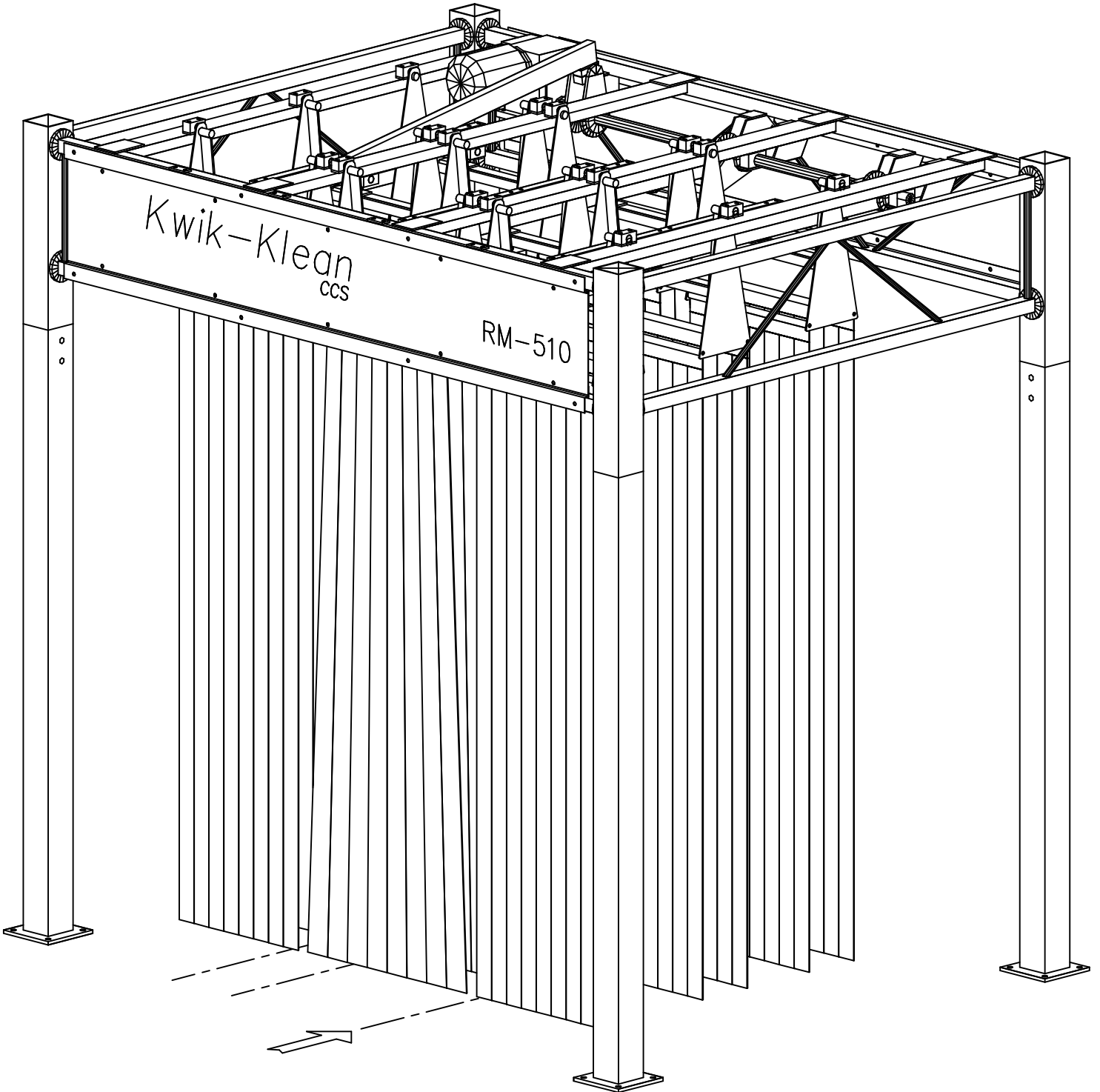
MAGNEIL

WASH SYSTEMS LIMITED

RM-510  
FRONT/BACK MITTER

JULY '00

1  
OF 6



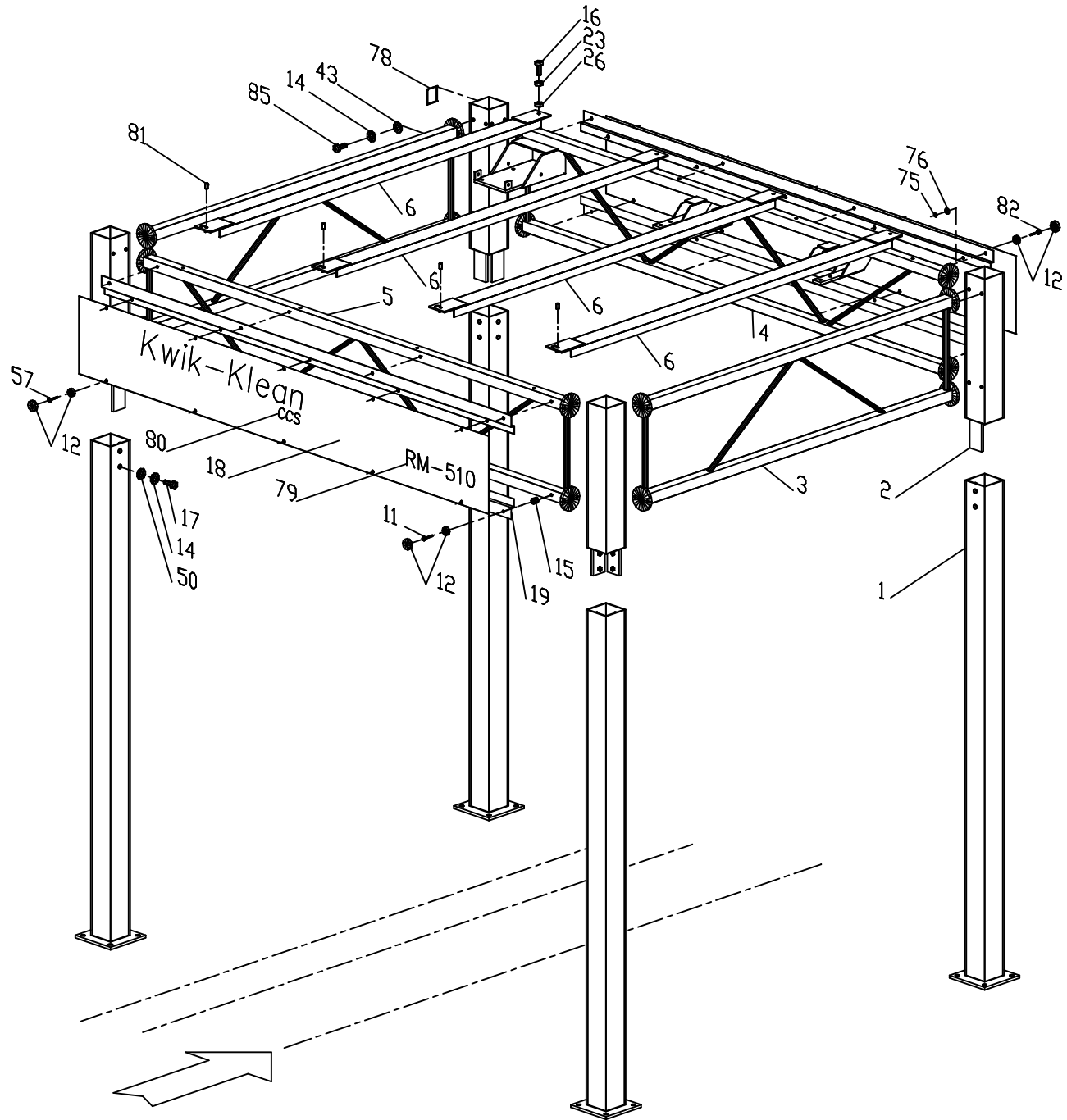
MAGNEIL

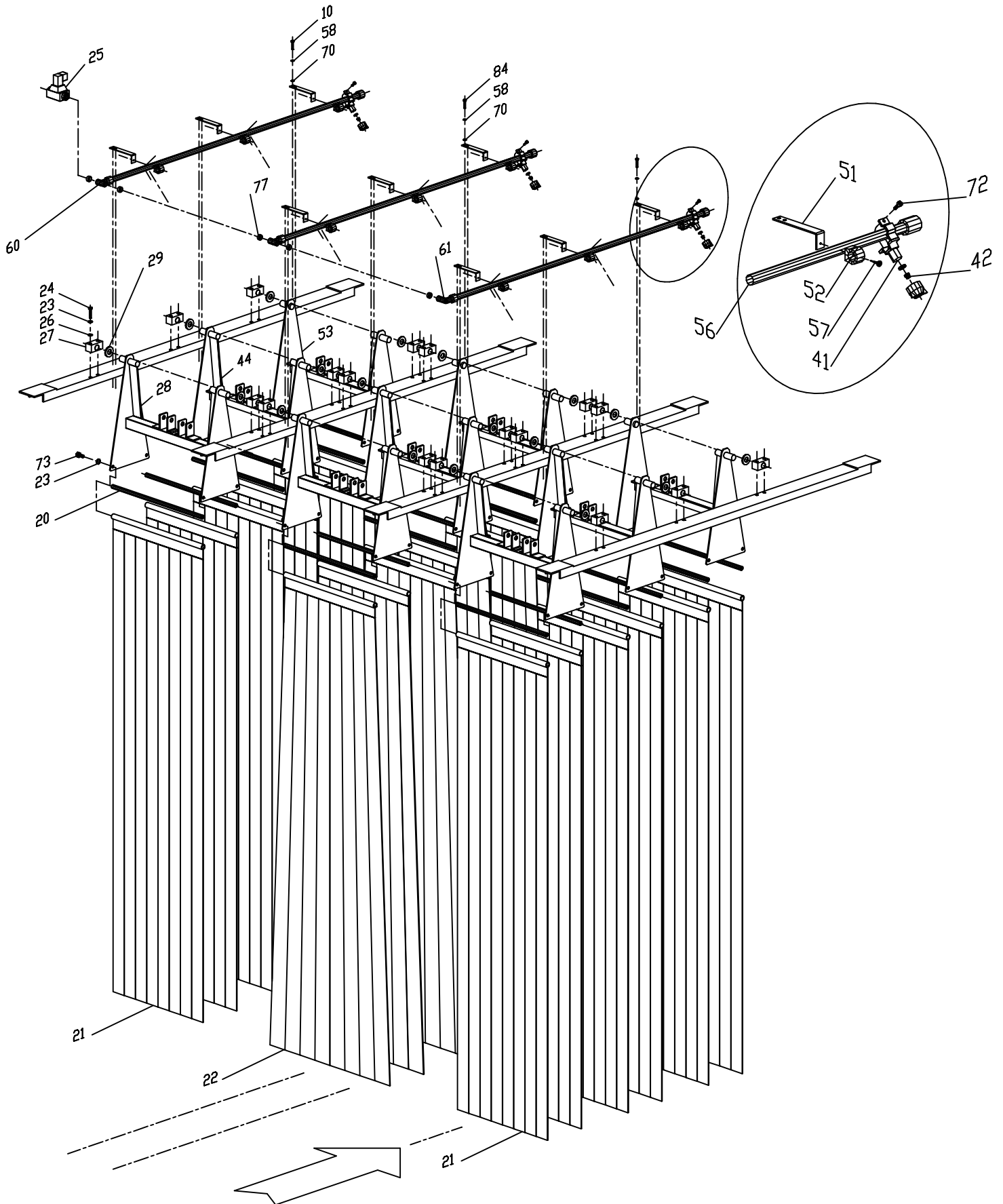
WASH SYSTEMS LIMITED

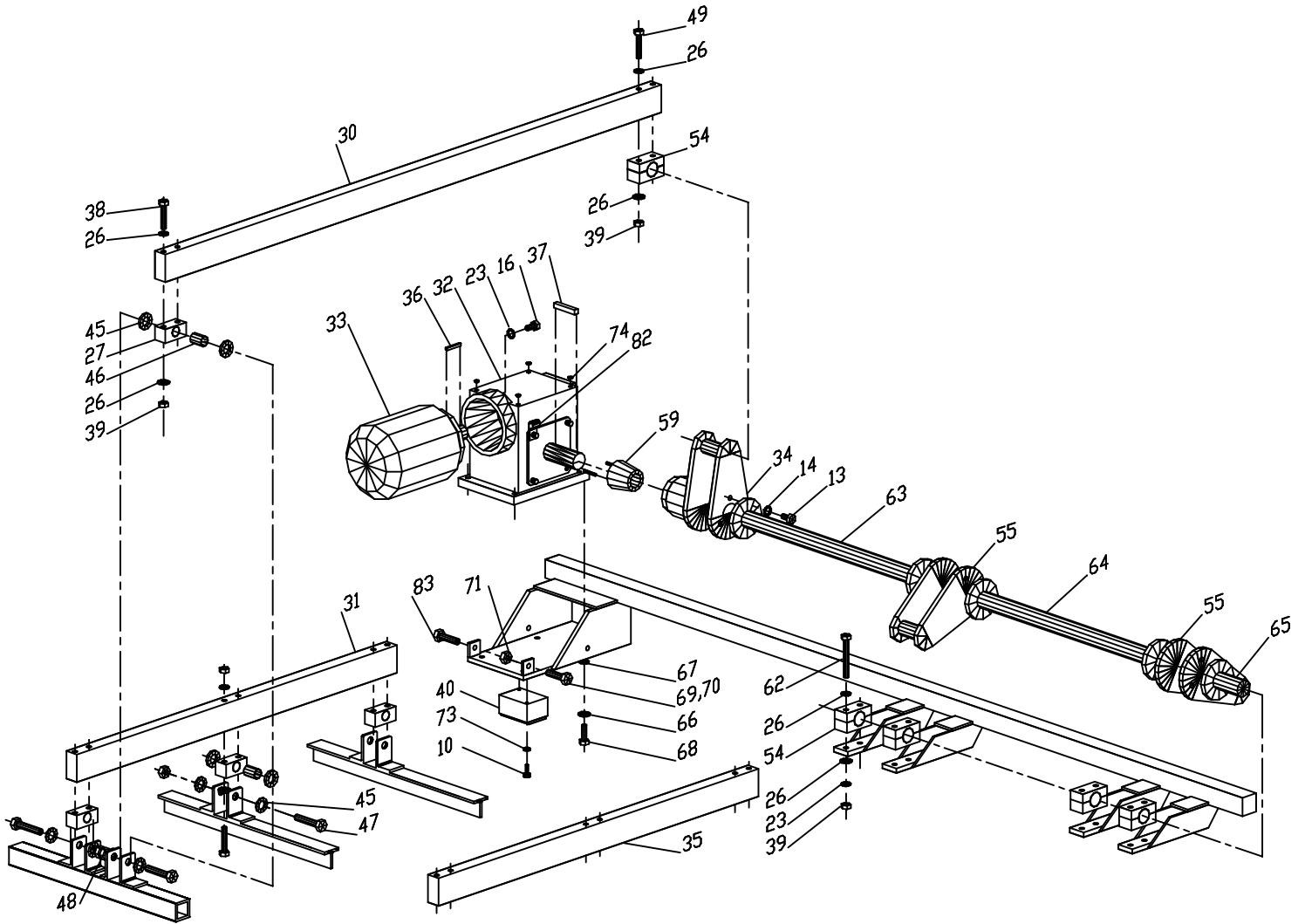
RM-510  
FRONT/BACK MITTER

NOV '02

2  
OF 6







Item no.	Req'd	RM 510 Description	Part no.	Remarks
1	4	Main Post	52-110-00-SG	Specify Color
2	4	4 Plate Stub Leg	52-111-00-SG	Specify Color
3	2	81" Side Truss	52-123-00-SG	
4	1	107" Motor Truss	52-124-00-SG	
5	1	107" Standard Truss	52-125-00-SG	
6	4	Standard 87 1/2" Beam	52-130-00-SG	
10	20	HHCS 1/4"-20 x 1/2" SS	82-504-008-SIC	
11	16	#10-24 x 1 1/2" Machine Screw SS	83-510-024-SNC	
12	44	Cover Ring w/ Support	52-190-00-PP	
13	15	HHCS 1/2"-13 x 1" SS	82-508-016-SIC	
14	63	1/2" Lock Washer SS	80-908-000-SI	
15	16	1/2"Dia Spacer x 7/8" Nylon	89-008-014-NI	
16	8	HHCS 3/8"-16 x 1" SS	82-506-016-SIC	
16a	4	HHCS 3/8"-16 x 1 1/4" SS	82-506-020-SIC	
17	48	HHCS 1/2"-13 x 1 1/4" SS	82-508-020-SIC	
18	2	Front & Back Facia S/G	52-185-00-PP	
19	4	Front & Back Facia Trim SS	52-181-00-PP	
20	18	Curtain Rod x 24"	52-310-00-MP	
21	12	Parellel Mitter Curtain	20-500-52-	Specify Color
22	6	Tapered Mitter Curtain	20-550-52-	Specify Color
23	84	3/8" Lock Washer SS	80-906-000-SI	
24	36	HHCS 3/8"-16 x 2" SS	82-506-032-SIC	
25	1	3/4" Water Solenoid Valve 24Volt	10-100-05-PP	
26	120	3/8" Flat Washer SS	80-106-000-SI	
27	30	1 1/8"Dia Pivot Bearing	52-750-00-MP	
28	3	F/B Curtain Rack (Push Rod)	52-201-00-SG	
29	18	1/8" UHMW Spacer Washer	52-800-02-PP	
30	3	58 7/8" Push Rod	52-251-00-SG	
31	1	44 7/8" Tie Rod	52-262-00-SG	
32	1	Gear Reducer	52-701-00-PP	Specify Oil, See Note
33	1	Electric Motor	52-700-00-PP	Specify Voltage
34	1	Crank Throw (Drive)	52-210-00-ZN	
35	2	46" Tie Rod	52-261-00-SG	
36	1	Electric Motor Shaft Key	52-710-00-MP	
37	1	Gearbox Shaft Key	52-711-00-MP	
38	24	HHCS 3/8"-16 x 5 1/2" SS	82-506-088-SIC	
39	38	3/8"-16 Nylock Nut SS	85-006-000-SIC	
40	1	Juction Box Ass'y	52-660-00-MP	

Item no.	Req'd	Description	Part no.	Remarks
41	9	Nozzle Body Ass'y	10-200-00-MP	
42	9	Spray Nozzle Tip	10-250-01-PP	Standard Size TP8006
43	32	1/2"SAE Flat Washer SS	80-208-000-SI	
44	5	F/B Curtain Rack	52-200-00-SG	
45	48	3/4"SAE Flat Washer PL	80-212-000-ZI	
46	12	Axle Bushing	44-268-00-PP	
47	12	HHCS 3/4"-16 x 3" PL	82-512-048-ZIF	
48	12	3/4"-16 Axle Nut PL	85-212-000-ZIF	
49	6	HHCS 3/8"-16 x 6" SS	82-506-096-SIC	
50	16	1/2" Flat Washer SS	80-108-000-SI	
51	9	Water Manifold Support Bracket S:	44-362-00-PP	
52	9	Water Pipe Clamp-Clic #20	90-259-01-PP	
53	1	F/B Curtain Rack (Motor End)	52-202-00-SG	
54	7	1 1/2"Dia Split Bearing	52-751-00-PP	
55	2	Crank Throw (Driven)	52-211-00-ZN	
56	3	Manifold Pipe Ass'y x 68" PVC	52-511-00-MP	
57	37	#10-24 x 1/2" Machine Screw SS	83-510-008-SNC	
58	20	1/4" Lock Washer SS	80-904-000-SI	
59	1	Taperlock Bushing w/ Set Screws	52-720-00-PP	
60	2	3/4" Blk Poly Tee	52-520-01-PP	
61	1	3/4"Hose Barb-3/4"NPT Blk Poly E	52-520-02-PP	
62	8	HHCS 3/8"-16 x 3 1/2" SS	82-506-056-SIC	
63	1	26 1/4" Crank Shaft	52-220-00-ZN	
64	1	22 1/8" Crank Shaft	52-221-00-ZN	
65	1	Idler Crank Shaft	52-222-00-ZN	
66	4	7/16" Lock Washer SS	80-907-000-SI	
67	4	7/16" Flat Washer SS	80-107-000-SI	
68	4	HHCS 7/16"-14 x 1 1/2" SS	82-507-024-SIC	
69	3	HHCS 3/8"-16 x 1 3/4" Full Thread	82-606-028-SIC	
70	20	1/4" Flat Washer SS	80-104-000-SI	
71	4	3/8"-16 Nut SS	84-006-000-SIC	
72	9	#10-24 x 5/8" Machine Screw SS	83-510-010-SNC	
73	36	HHCS 3/8"-16 x 3/4" SS	82-506-012-SIC	
74	4	Push-in Fastener	52-191-00-PP	
75	28	#10-24 Nut SS	84-010-000-SNC	
76	28	#10 Lock Washer SS	80-910-000-SN	
77	5	1"-1 1/8" Hose Clamp	52-040-00-PP	
78	1	Serial Identification Tag	36-900-00-PP	
79	2	RM-510 Dark Blue Decal	36-510-01-PP	
80a	2	13" Softline Decal	36-001-00-PP	Specify Item 80a or 80b
80b	2	Kwik-Klean Decal	36-003-00-PP	Specify Item 80a or 80b
81	4	5/16" x 1" Spring Pin SS	86-205-016-SI	
82	1	Wiring Clamp	52-715-00-MP	
83	1	HHCS 3/8"-16 x 1 1/2" SS	82-606-024-SIC	

**NOTE:** -Synthetic oil (1/2 Gal) in item # 32  
 -AGMA #7EP USEM P.N. 000190  
 -AGMA #8 USEM P.N. 000191