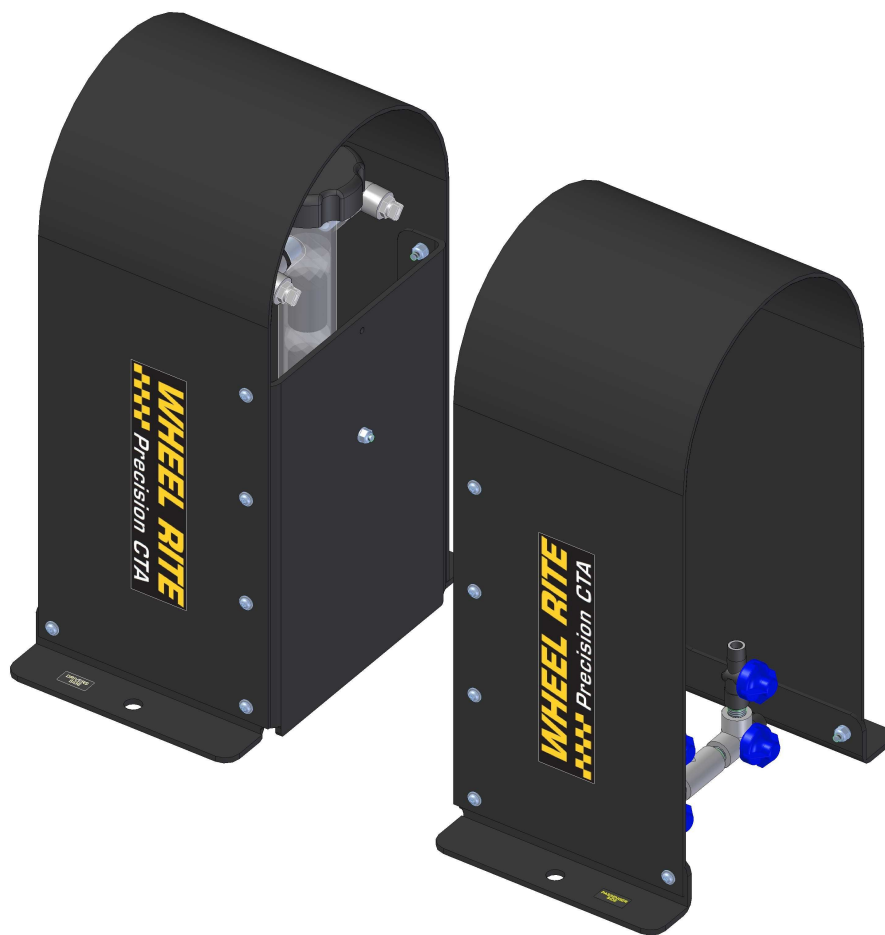
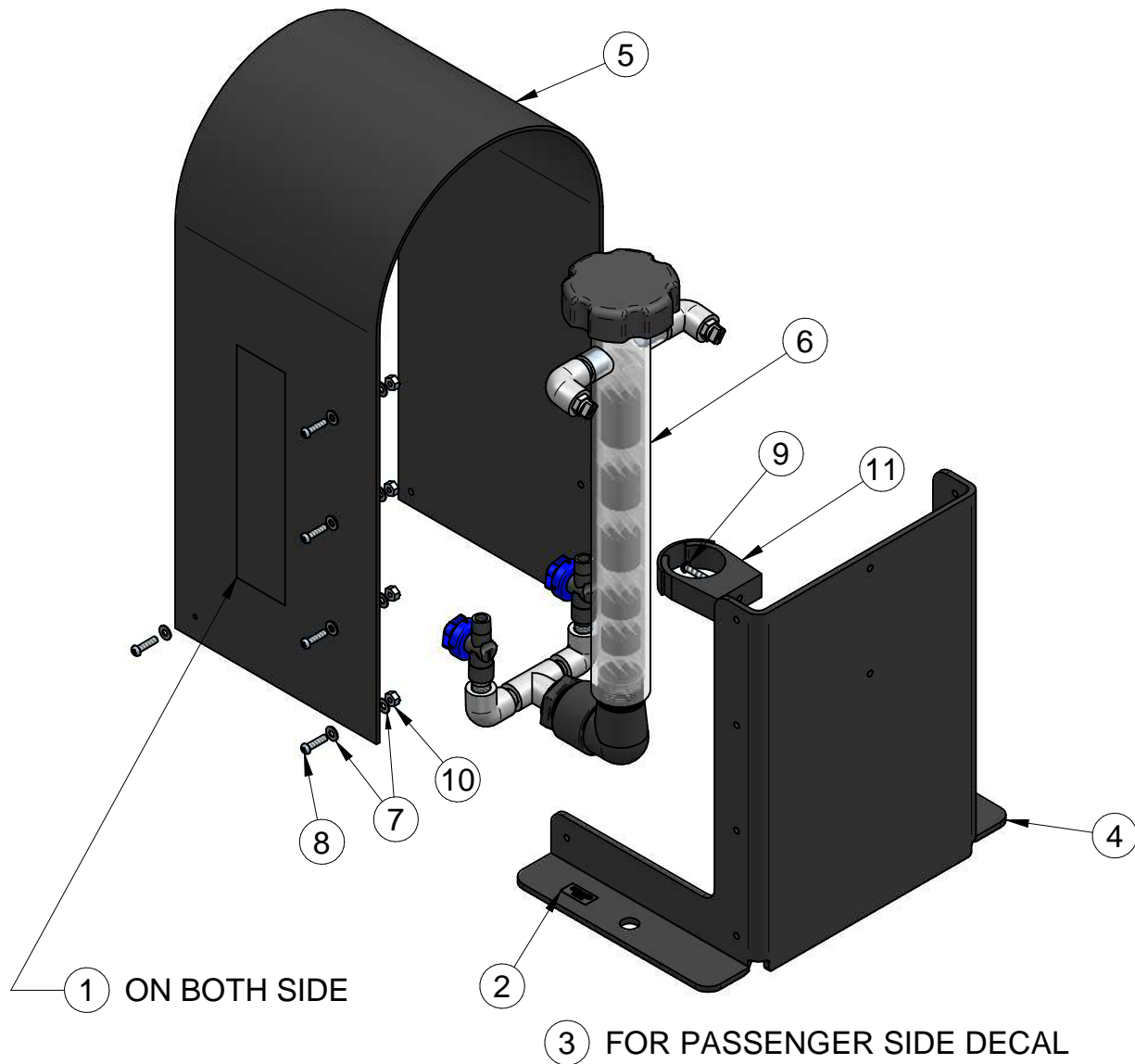


DOCUMENT #EPL-46-440-00-MP



46-440-00-MP ASSEMBLY VIEW

BELOW SHOWN DRIVE SIDE. MIRROR IMAGES FOR PASSENGER SIDE

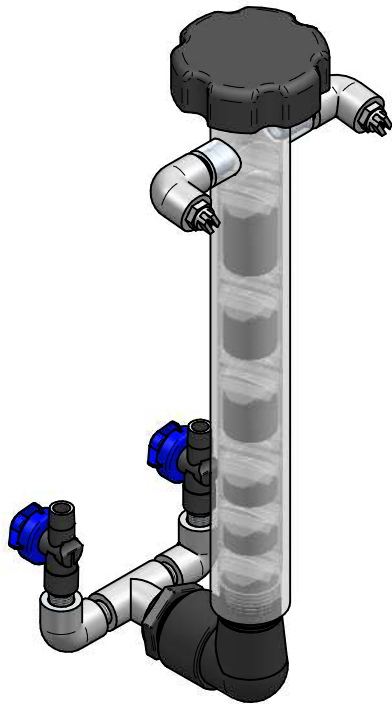


46-440-00-MP PARTS LIST

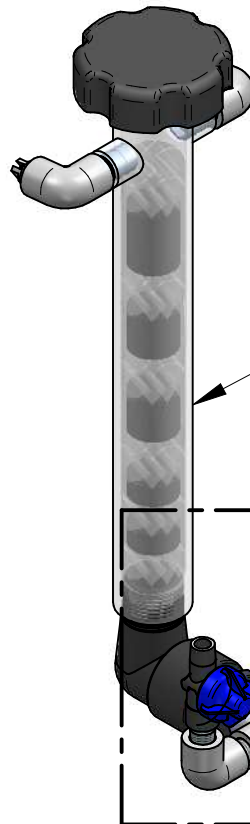
REF.	DESCRIPTION	PART NUMBER	QTY
1	DECAL WHEELRITE TIRE FOAMER	36-060-10-PP	4
2	DRIVERS SIDE YLW ON BLK 1" x 1/2"	36-060-20-PP	1
3	PASSENGER SIDE YLW ON BLK 1" x 1/2"	36-060-30-PP	1
4	WHEELRITE FOAMER BASE	46-440-15-BK	2
5	WHEELRITE FOAMER COVER	46-440-35-MP	2
6	MACNEIL MODIFIED CTA	46-440-75-MP	1
7	WASHER FLAT SS #10	80-110-000-SN	42
8	SCREW PHL PAN-HD SS #10-24 x 3/4"	83-510-012-SNC	20
9	SCREW PHL PAN-HD SS #10-24 x 1-1/4"	83-510-020-SNC	2
10	NUT NYLOCK SS #10-24	85-010-240-SIC	22
11	1-1/4 SCH40 COBRA CLAMP DURAPIPE	90-259-50-PP	2

**ABOVE BILL OF MATERIALS BASED ON SET
BUILT AND SOLD IN SETS WITH
DRIVERS SIDE AND PASSENGER SIDE**

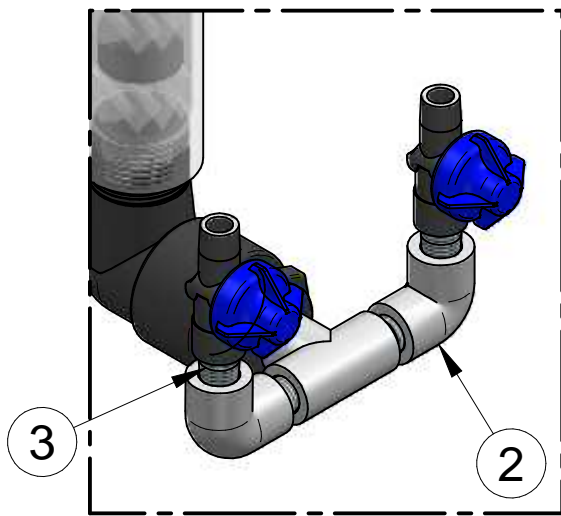
46-440-75-MP MACNEIL MODIFIED CTA SET



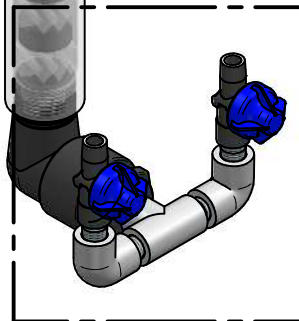
Driver's Side Nozzle 20e80



Passenger's Side Nozzle 20e65



DETAIL A



A

DISASSEMBLE MRFOAMER CTA AND REASSEMBLE USING THE ADDITIONAL PARTS AS SHOWN IN DETAIL A

46-440-75-MP PARTS LIST

REF.	DESCRIPTION	PART NUMBER	QTY
1	MRFOAMER CTA TIRE FOAMER (SOLD AS SET)	46-105-85-PP	1
2	1/4FNPTX1/4 FNPT PVC ELBOW	46-440-25-PP	4
3	FTG NIPPLE PVC SCH80 1/4 x CL	90-231-17-PP	4