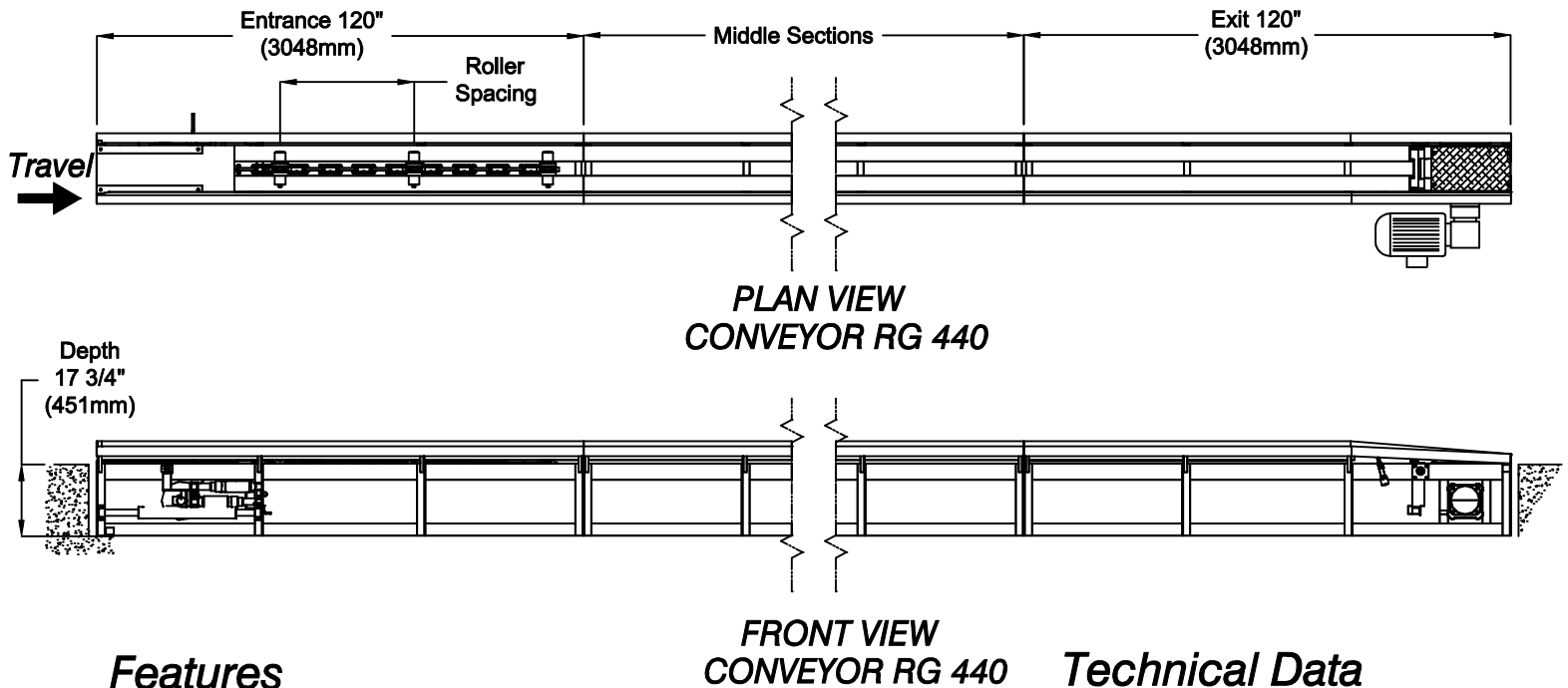




# RG 440 CONVEYOR

## Electric Conveyor

Rev. A March 20, 2006



### Features

- Air controlled chain tension  
Quad air shocks provide constant chain tension and eliminate Conveyor jamming due to loose chain
- 52000 LB. Chain tensile strength
- Automatic / Manual Roller-Up system
- Trap doors in Entrance and Exit  
Provide a safe, simple and quiet operation
- Best service record in industry
- Interconnecting chain design  
Allows Roller Removal with no tools
- Electric Drive
- 13"(330mm) Guide rail width
- Right hand Drive system installation

### Options

- Black or Yellow finish Construction
- Shallow Trench option
- Variable Roller spacing Is available

### Technical Data

#### *Pneumatics*

- 1/4" Line
- 0.5 CFM (0.014 CMM)
- 100 PSI (7 BAR)

#### *Electric Motor / VFD*

- 230V / 460V 60Hz
- 3HP OR 5HP

#### *Service requirement*

- 3HP, 230V , 3 PH - 16A
- 3HP, 460V , 3 PH - 10A
- 5HP, 230V , 3 PH - 26A
- 5HP, 460V , 3 PH - 15A

#### *Control Voltage*

- 110 VAC 60 HZ
- 1 PHASE
- 1 AMP

Specifications Subject To Change. Information Provided is For Reference Only and Is Not To Be Used For Installation Or Construction Purposes. refer To MacNeil Wash Systems Equipment Drawings For Installation Specifications.